

# RIVERSIDE



## Home Features



3-5  
Bedrooms



2.5-4.5  
Bathrooms



2-3  
Garage Bays

## Square Footage

**Total Living Area** 2,944+ Sq. Ft.

**1st Floor** 2,112+ Sq. Ft.

**2nd Floor** 832+ Sq. Ft.

## Contact



865-966-8700



[info@saddlebrookproperties.com](mailto:info@saddlebrookproperties.com)



[saddlebrookproperties.com](http://saddlebrookproperties.com)

## Social



 EUROPEAN



 FARMHOUSE



 FRENCH COUNTRY

Saddlebrook Properties, LLC uses pictures, elevations and floor plans for illustrative marketing purposes only. Saddlebrook's working construction documents & codes take precedent in guiding the constructions of each home. Measurements, prices and specifications are subject to change without notice. All offerings are subject to errors and omissions.

# RIVERSIDE



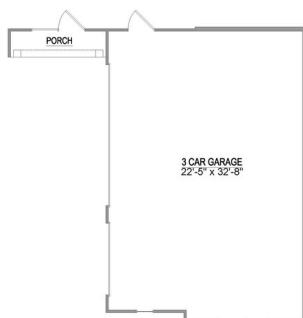
## 1<sup>st</sup> Floor

### Key Features

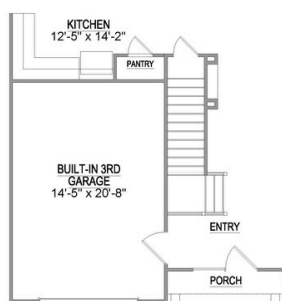
- Open Concept Living
- Owner's Suite on Main
- Gourmet Kitchen
- Flex Room
- Walk-in Pantry
- Powder Room
- Courtyard Entry Garage
- Covered Porch



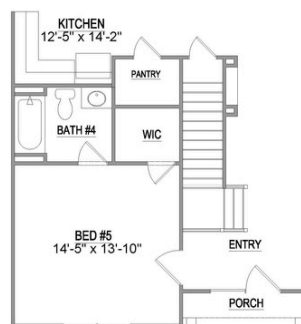
## 1<sup>st</sup> Floor Options



Optional 3rd Garage Bay



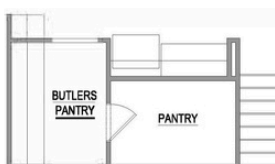
Optional Built-In 3rd Garage Bay



Optional 5th Bedroom and 4th Bathroom



Optional Valet



Optional Butlers Pantry



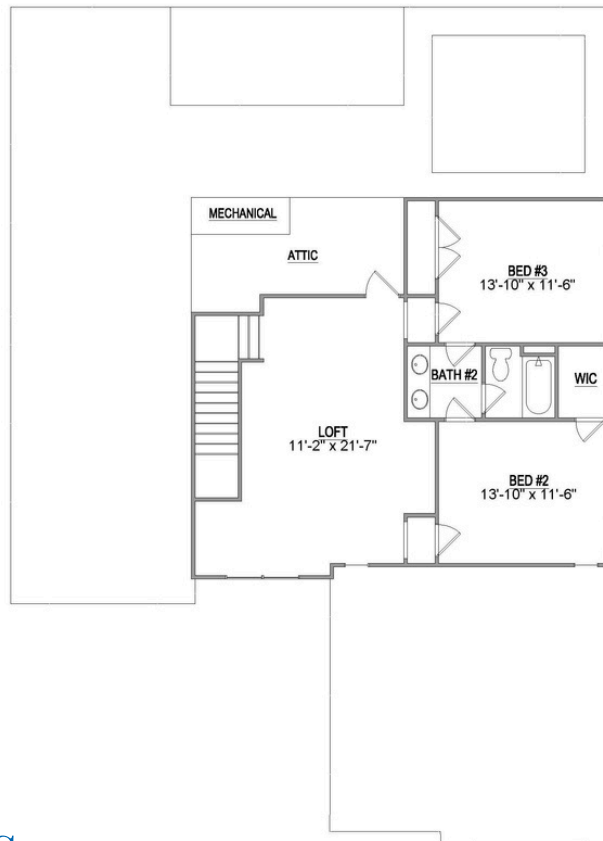
Optional Extended Porch

Saddlebrook Properties, LLC uses pictures, elevations and floor plans for illustrative marketing purposes only. Saddlebrook's working construction documents & codes take precedent in guiding the constructions of each home. Measurements, prices and specifications are subject to change without notice. All offerings are subject to errors and omissions.

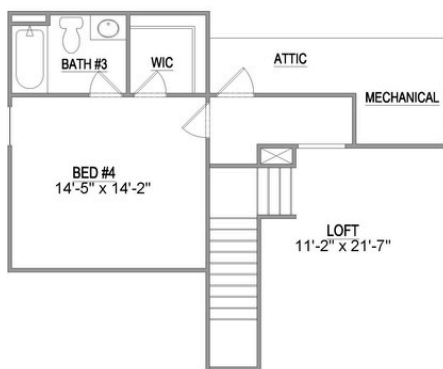
## 2<sup>nd</sup> Floor

### Key Features

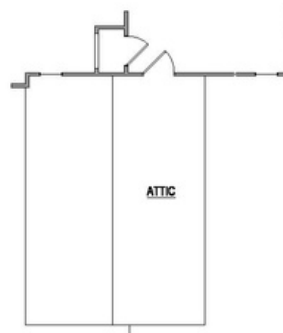
- Spacious Loft
- 2 Bedrooms
- 1 Full Bathroom
- Walk-in Attic Storage



## 2<sup>nd</sup> Floor Options



Optional 4th Bedroom  
and 3rd Bathroom



Optional Attic Storage