

# ESSEX



## Home Features



4-5  
Bedrooms



2.5-4.5  
Bathrooms



3  
Garage Bays

## Square Footage

**Total Living Area** 3,103+ Sq. Ft.

**1st Floor** 2,127+ Sq. Ft.

**2nd Floor** 976+ Sq. Ft.

## Contact



865-966-8700



[info@saddlebrookproperties.com](mailto:info@saddlebrookproperties.com)



[saddlebrookproperties.com](http://saddlebrookproperties.com)

## Social



Saddlebrook Properties, LLC uses pictures, elevations and floor plans for illustrative marketing purposes only. Saddlebrook's working construction documents & codes take precedent in guiding the constructions of each home. Measurements, prices and specifications are subject to change without notice. All offerings are subject to errors and omissions.

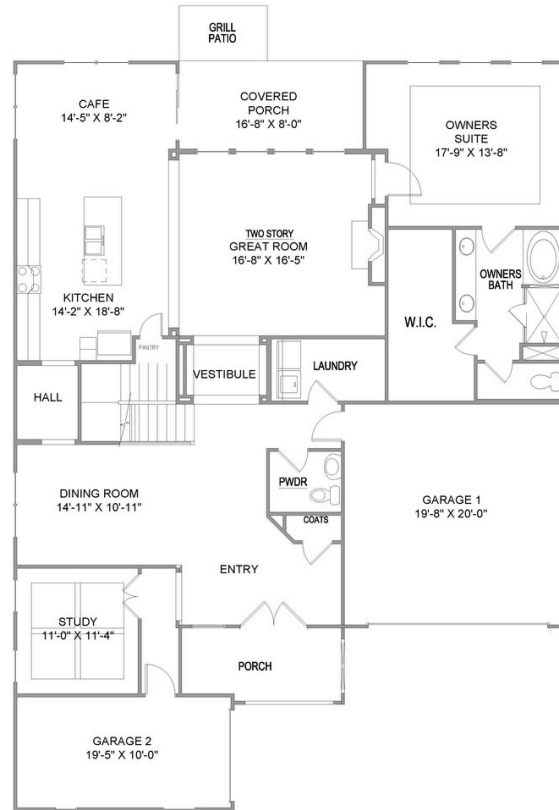
# ESSEX



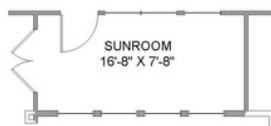
## 1<sup>st</sup> Floor

### Key Features

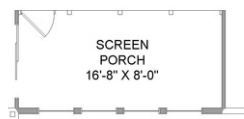
- Front Porch
- Two Story Great Room
- Owner's Suite on Main
- Formal Dining Room
- Casual Cafe Dining Area
- Designated Study
- Powder Room
- Covered Porch and Grill Patio
- 3rd Bay Garage



## 1<sup>st</sup> Floor Options



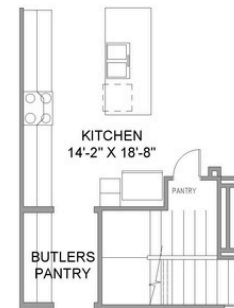
Optional Sunroom



Optional Screened Porch



Optional Walk-In-Closet  
Door to Laundry



Optional Butlers Pantry



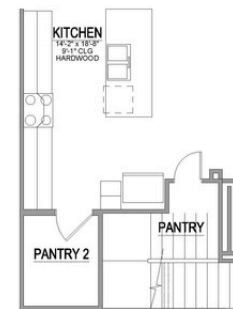
Optional Covered  
Extended Porch



Optional 5th  
Bedroom Suite



Optional Deluxe  
Owner's Bathroom



Optional 2nd Pantry

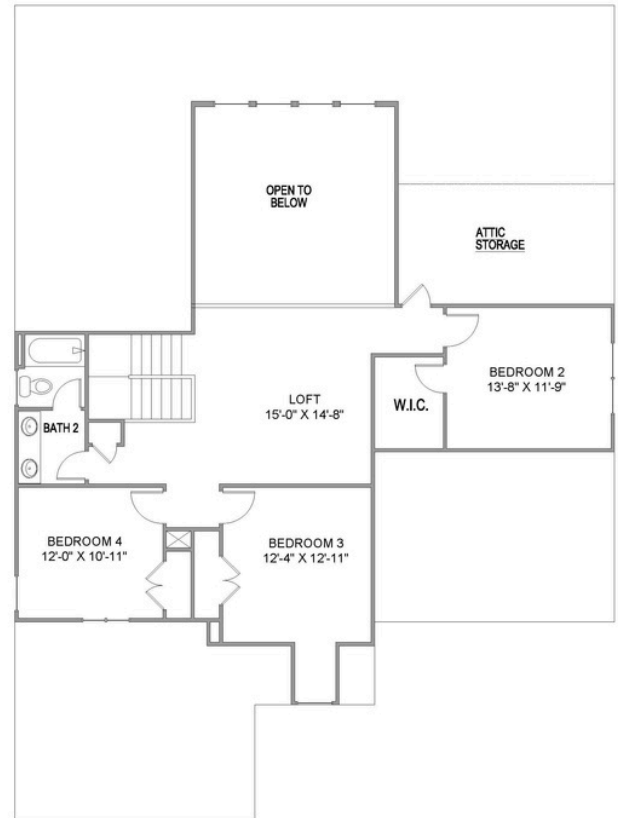
Optional Extended Great Room

Saddlebrook Properties, LLC uses pictures, elevations and floor plans for illustrative marketing purposes only. Saddlebrook's working construction documents & codes take precedent in guiding the constructions of each home. Measurements, prices and specifications are subject to change without notice. All offerings are subject to errors and omissions.

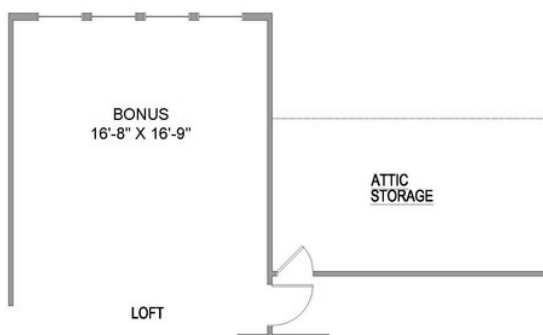
## 2<sup>nd</sup> Floor

### Key Features

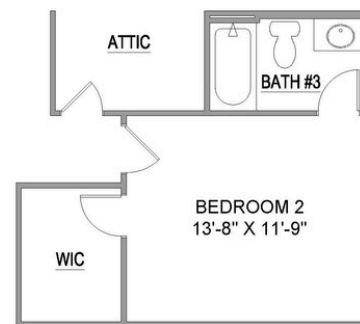
- Spacious Loft Open to Great Room Below
- Walk-in Attic



## 2<sup>nd</sup> Floor Options



Optional Bonus Room



Optional 3rd Bathroom