

THE  
FOUNDRY  
AT HARDIN VALLEY

COMMUNITY GUIDE

---



## ABOUT

---

The Foundry at Hardin Valley is a peaceful community of only 27 homesites offering peaceful living with easy access to Knoxville, Farragut, and Oak Ridge.

The Foundry offers spacious homes featuring open-concept floor plans, modern finishes, and the convenience of 3-car garages included with every design. The community offers six brand-new floor plans, each thoughtfully crafted with our clients' most requested home features.

The Foundry is located just minutes from local shops and restaurants in Hardin Valley, the Shops at Turkey Creek, Melton Hill Park, Pellissippi State Community College, and Hardin Valley Schools. Outdoors enthusiasts will appreciate easy access to fishing, boating, and hiking at the nearby Melton Hill Park.

Explore our new floor plans, and create your home in The Foundry at Hardin Valley!

## AMENITIES

---

- A peaceful 27-home community with scenic mountain views
- 6 brand-new floor plans with spacious, open designs
- 3-car garages included on every floor plan
- Minutes from local shops and restaurants, Melton Hill Park, Pellissippi State Community College, the Shops at Turkey Creek, and Hardin Valley Schools

## CONTACT US



# EDWIN



## EUROPEAN



## FARMHOUSE



## FRENCH COUNTRY

## Home Features



3-5  
Bedrooms



2.5-4  
Bathrooms



3  
Garage Bays

## Square Footage

**Total Living Area** 3292+ Sq. Ft.

**1st Floor** 2157+ Sq. Ft.

**2nd Floor** 1135+ Sq. Ft.

## Contact



865-966-8700



[info@saddlebrookproperties.com](mailto:info@saddlebrookproperties.com)



[saddlebrookproperties.com](http://saddlebrookproperties.com)

## Social



Saddlebrook Properties, LLC uses pictures, elevations and floor plans for illustrative marketing purposes only. Saddlebrook's working construction documents & codes take precedent in guiding the constructions of each home. Measurements, prices and specifications are subject to change without notice. All offerings are subject to errors and omissions



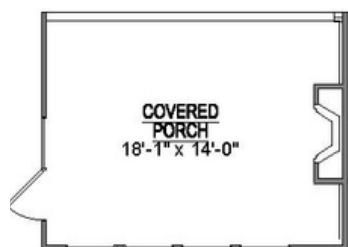
## 1<sup>st</sup> Floor

### Key Features

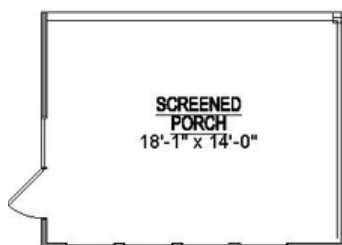
- 3-Car Garage
- Luxurious Main-Level Owner's Suite with Spa-Inspired Ensuite
- Private Covered Porch Retreat
- Grand 10' Ceilings with 8' Doorways
- Main-Level Flex Room



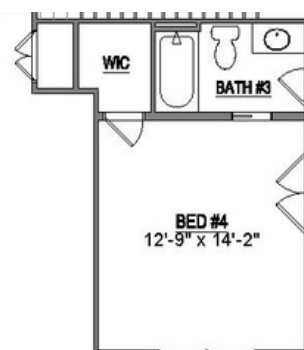
## 1<sup>st</sup> Floor Options



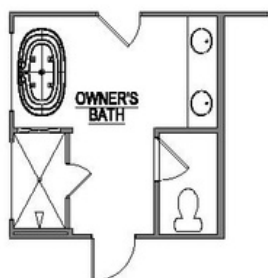
Optional Outdoor  
Fireplace



Optional Screened  
Porch



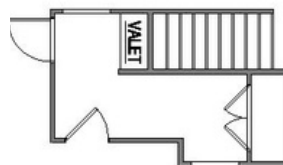
Optional Bed 4  
& Bath 3



Optional Deluxe  
Owners Bath



Optional Utility  
Sink



Optional Valet

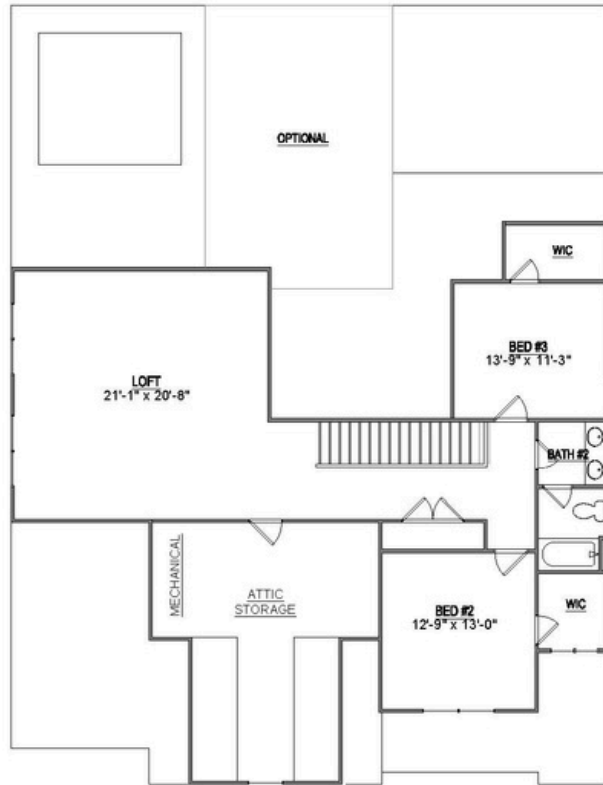
Saddlebrook Properties, LLC uses pictures, elevations and floor plans for illustrative marketing purposes only. Saddlebrook's working construction documents & codes take precedent in guiding the constructions of each home. Measurements, prices and specifications are subject to change without notice. All offerings are subject to errors and omissions.



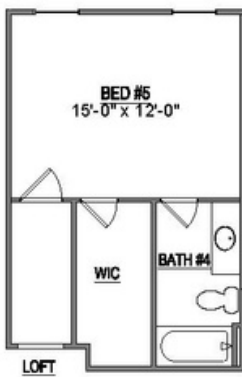
## 2<sup>nd</sup> Floor

### Key Features

- Expansive Loft Area
- Generous Attic Storage
- 2 Bedrooms
- 1 Bathroom



## 2<sup>nd</sup> Floor Options



Optional Bed 5 & Bath 4



# EMORY



## EUROPEAN



## FARMHOUSE



## FRENCH COUNTRY

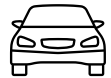
## Home Features



4-5  
Bedrooms



3-4  
Bathrooms



3  
Garage Bays

## Square Footage

**Total Living Area** 3133+ Sq. Ft.

**1st Floor** 1977+ Sq. Ft.

**2nd Floor** 1136+ Sq. Ft.

## Contact



865-966-8700



[info@saddlebrookproperties.com](mailto:info@saddlebrookproperties.com)



[saddlebrookproperties.com](http://saddlebrookproperties.com)

## Social



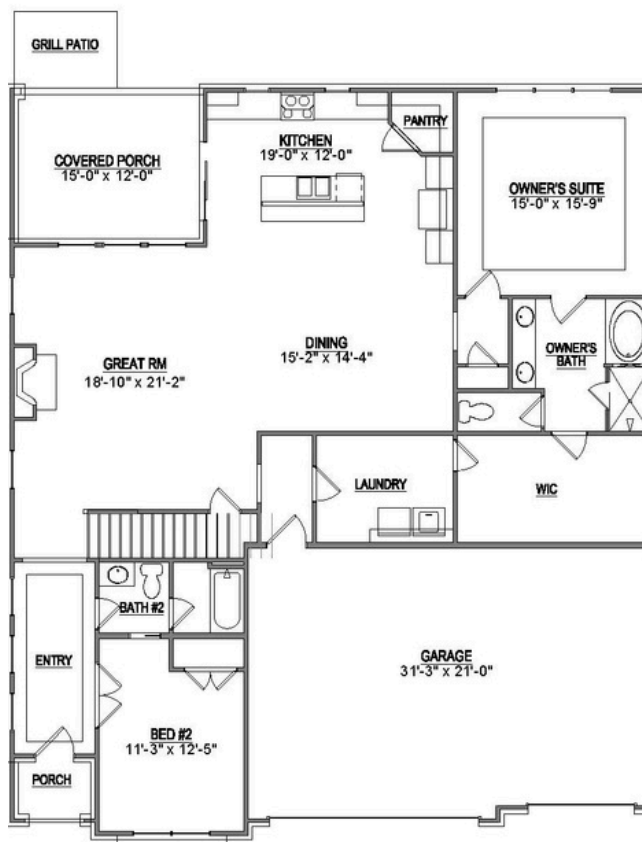
Saddlebrook Properties, LLC uses pictures, elevations and floor plans for illustrative marketing purposes only. Saddlebrook's working construction documents & codes take precedent in guiding the constructions of each home. Measurements, prices and specifications are subject to change without notice. All offerings are subject to errors and omissions



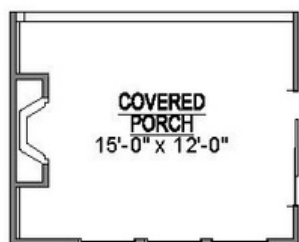
## 1<sup>st</sup> Floor

### Key Features

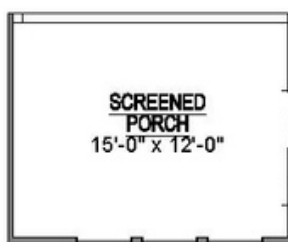
- 3-Car Garage
- Luxurious Main-Level Owner's Suite
- Private Covered Porch Retreat
- Grand 10' Ceilings with 8' Doorways
- Main-Level Guest Suite



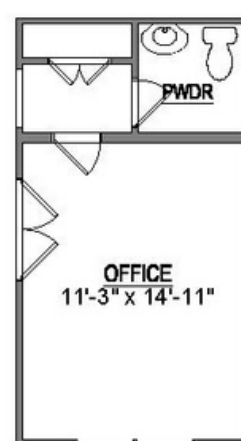
## 1<sup>st</sup> Floor Options



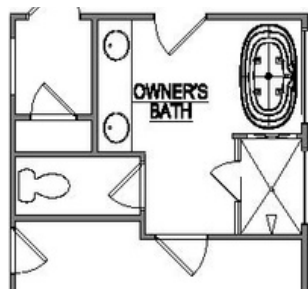
Optional Outdoor  
Fireplace



Optional Screened  
Porch



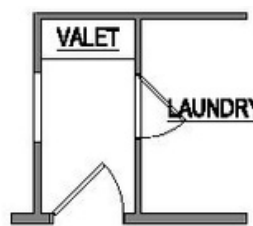
Optional Office  
& Powder Rm



Optional Deluxe  
Owners Bath



Optional Utility  
Sink



Optional Valet

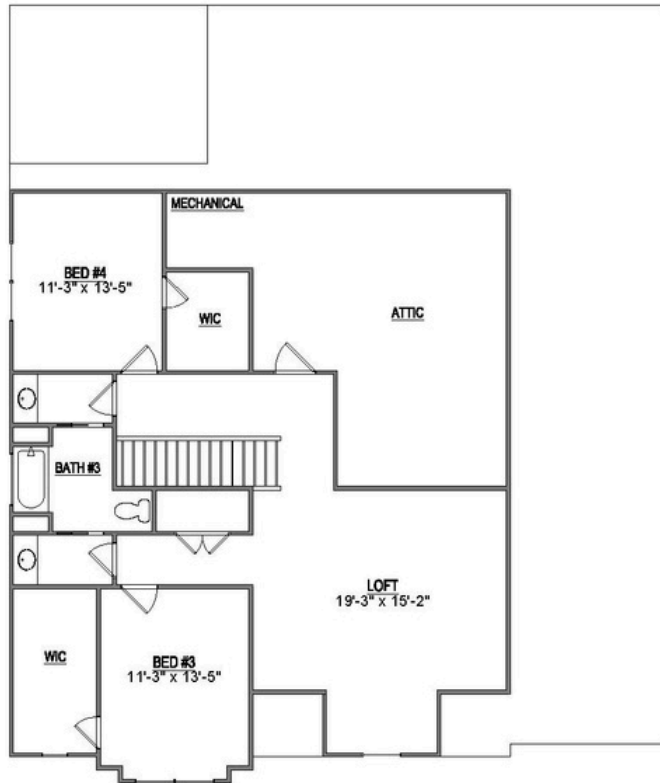
Saddlebrook Properties, LLC uses pictures, elevations and floor plans for illustrative marketing purposes only. Saddlebrook's working construction documents & codes take precedent in guiding the constructions of each home. Measurements, prices and specifications are subject to change without notice. All offerings are subject to errors and omissions.



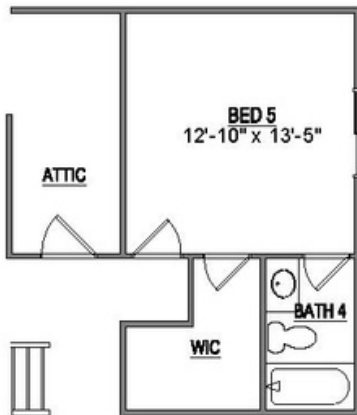
## 2<sup>nd</sup> Floor

### Key Features

- Expansive Loft Area
- Generous Attic Storage
- 2 Bedrooms
- 1 Bathroom



## 2<sup>nd</sup> Floor Options



Optional Bed 5 & Bath 4



# EVERETT

---



## Home Features

---



4-6  
Bedrooms



3.5-4.5  
Bathrooms



2-3  
Garage Bays

## Square Footage

---

**Total Living Area** 3,086+ Sq. Ft.

**1st Floor** 1,847+ Sq. Ft.

**2nd Floor** 1,239+ Sq. Ft.

## Contact

---



865-966-8700



[info@saddlebrookproperties.com](mailto:info@saddlebrookproperties.com)



[saddlebrookproperties.com](http://saddlebrookproperties.com)

## Social

---



Saddlebrook Properties, LLC uses pictures, elevations and floor plans for illustrative marketing purposes only. Saddlebrook's working construction documents & codes take precedent in guiding the constructions of each home. Measurements, prices and specifications are subject to change without notice. All offerings are subject to errors and omissions.



# EVERETT



## 1<sup>st</sup> Floor

### Key Features

- Open Concept Living
- Front Porch
- Owner's Suite on Main
- Flex Room
- Designer Kitchen
- Walk-in Pantry
- Large Mud Room
- 3rd Bay Garage



## 1<sup>st</sup> Floor Options



Optional 3rd Garage Bay  
on 2 Car Garage



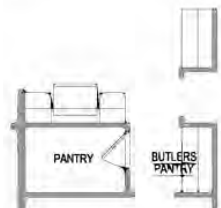
Optional Study  
Instead of Garage



Optional 5th Bedroom  
and 4th Bathroom



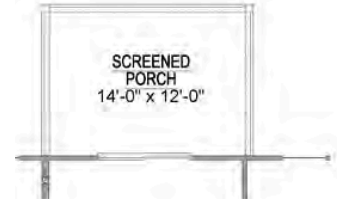
Optional Covered Porch



Optional Butlers Pantry



Optional Valet



Optional Screened Porch

Saddlebrook Properties, LLC uses pictures, elevations and floor plans for illustrative marketing purposes only. Saddlebrook's working construction documents & codes take precedent in guiding the constructions of each home. Measurements, prices and specifications are subject to change without notice. All offerings are subject to errors and omissions.



# EVERETT



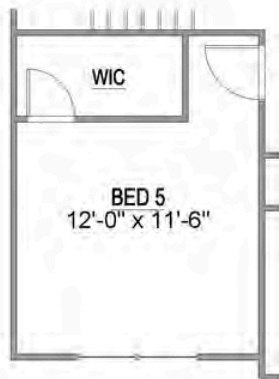
## 2<sup>nd</sup> Floor

### Key Features

- 3 Bedrooms w/ Walk-in Closets
- 2 Full Baths
- Spacious Loft
- Walk-in Attic Storage



## 2<sup>nd</sup> Floor Options



Optional 5th or 6th  
Bedroom Instead of Loft

Saddlebrook Properties, LLC uses pictures, elevations and floor plans for illustrative marketing purposes only. Saddlebrook's working construction documents & codes take precedent in guiding the constructions of each home. Measurements, prices and specifications are subject to change without notice. All offerings are subject to errors and omissions.



# HOLSTON



EUROPEAN



FARMHOUSE



FRENCH COUNTRY

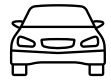
## Home Features



4-5  
Bedrooms



3-4  
Bathrooms



3  
Garage Bays

## Square Footage

**Total Living Area** 3300+ Sq. Ft.

**1st Floor** 2232+ Sq. Ft.

**2nd Floor** 1068+ Sq. Ft.

## Contact



865-966-8700



[info@saddlebrookproperties.com](mailto:info@saddlebrookproperties.com)



[saddlebrookproperties.com](http://saddlebrookproperties.com)

## Social



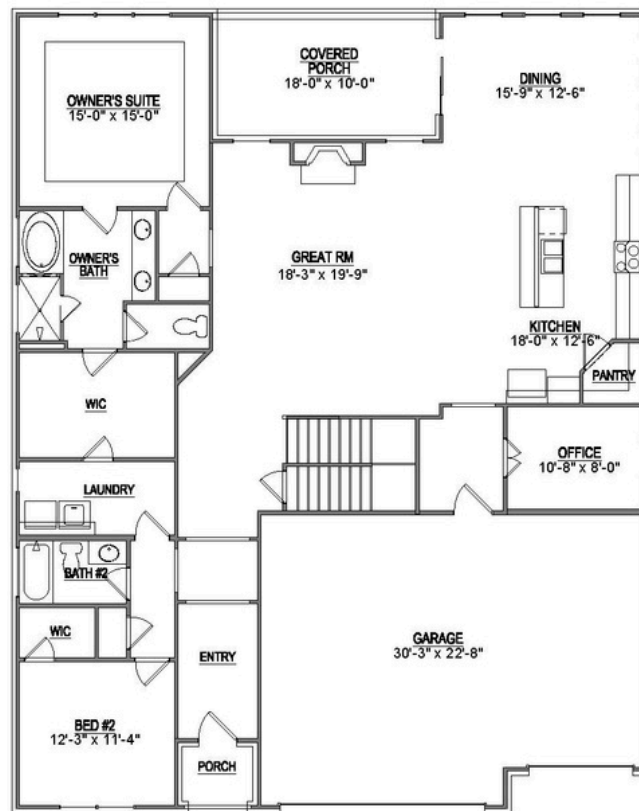
Saddlebrook Properties, LLC uses pictures, elevations and floor plans for illustrative marketing purposes only. Saddlebrook's working construction documents & codes take precedent in guiding the constructions of each home. Measurements, prices and specifications are subject to change without notice. All offerings are subject to errors and omissions



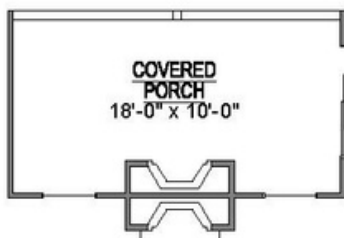
## 1<sup>st</sup> Floor

### Key Features

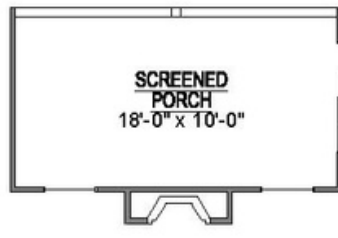
- 3-Car Garage
- Dramatic 2-Story Entry
- Elegant Owner's Suite with Luxury Ensuite
- Private Covered Porch Retreat
- Grand 10' Ceilings with 8' Doorways
- Main-Level Guest Suite



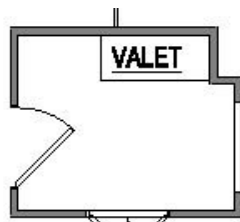
## 1<sup>st</sup> Floor Options



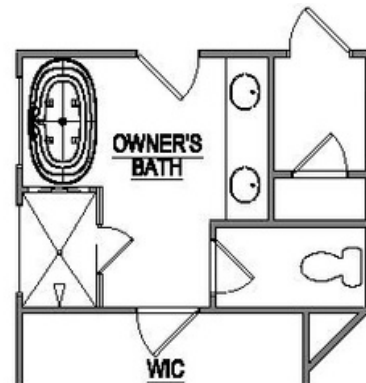
Optional Outdoor  
Fireplace



Optional Screened  
Porch



Optional Valet



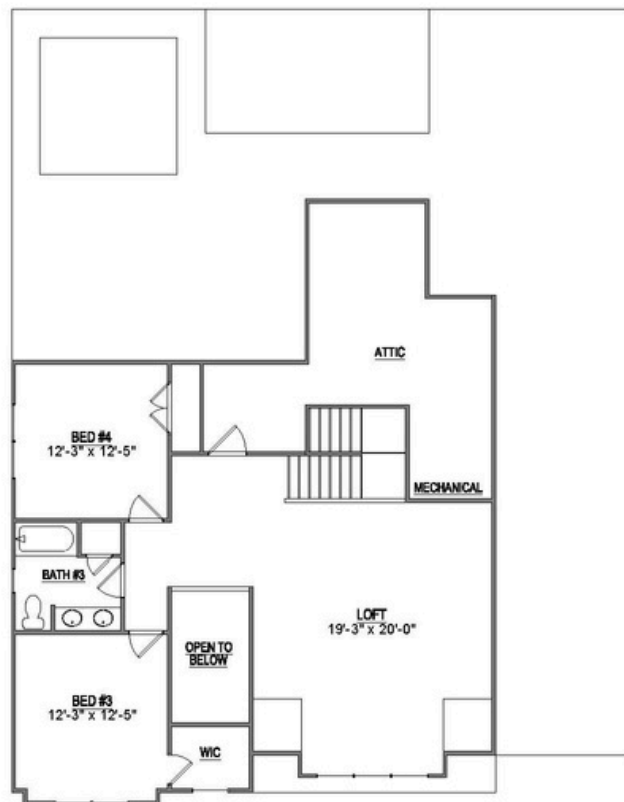
Optional Deluxe  
Owners Bath



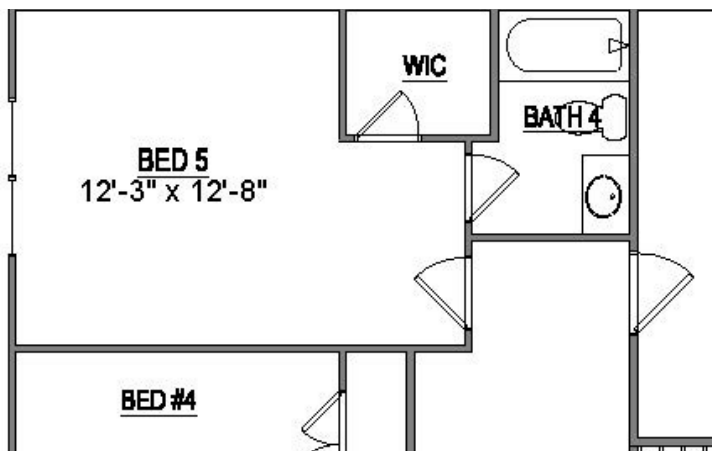
## 2<sup>nd</sup> Floor

### Key Features

- Versatile Loft Area
- Spacious Attic Storage
- 2 Bedrooms
- 1 Bathroom



## 2<sup>nd</sup> Floor Options



Optional Bed 5  
& Bath 4



# HUDSON



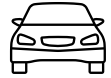
## Home Features



3-4  
Bedrooms



2.5-3.5  
Bathrooms



3  
Garage Bays

## Square Footage

**Total Living Area** 2,669+ Sq. Ft.

**1st Floor** 2,246+ Sq. Ft.

**2nd Floor** 423+ Sq. Ft.

## Contact



865-966-8700



[info@saddlebrookproperties.com](mailto:info@saddlebrookproperties.com)



[saddlebrookproperties.com](http://saddlebrookproperties.com)

## Social



Saddlebrook Properties, LLC uses pictures, elevations and floor plans for illustrative marketing purposes only. Saddlebrook's working construction documents & codes take precedent in guiding the constructions of each home. Measurements, prices and specifications are subject to change without notice. All offerings are subject to errors and omissions.



# HUDSON



## 1<sup>st</sup> Floor

### Key Features

- Open Concept Living
- Owner's Suite on Main
- Walk-in Kitchen Pantry
- Large Main level Laundry Room
- 2 Additional Bedrooms with Full Bathroom
- Designer Kitchen with Adjoining Dining Room
- Powder Room
- Spacious Covered Porch
- 3-Car Garage



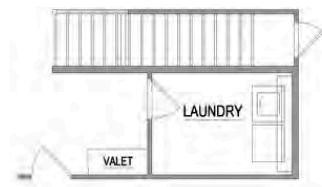
## 1<sup>st</sup> Floor Options



Optional Screened Porch



Optional Extended Covered Porch



Optional Laundry with Valet

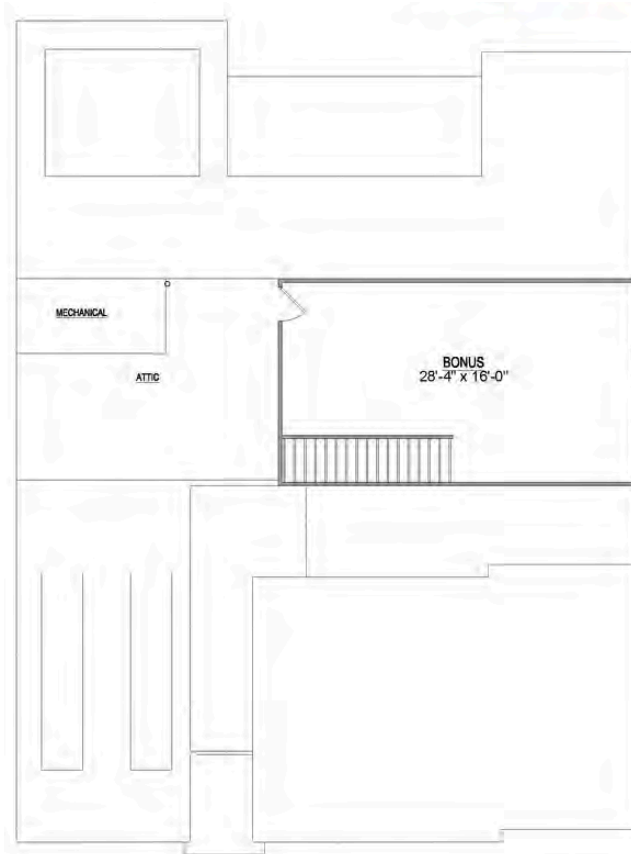
Saddlebrook Properties, LLC uses pictures, elevations and floor plans for illustrative marketing purposes only. Saddlebrook's working construction documents & codes take precedent in guiding the constructions of each home. Measurements, prices and specifications are subject to change without notice. All offerings are subject to errors and omissions.



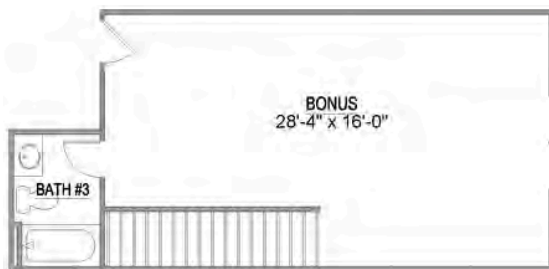
## 2<sup>nd</sup> Floor

### Key Features

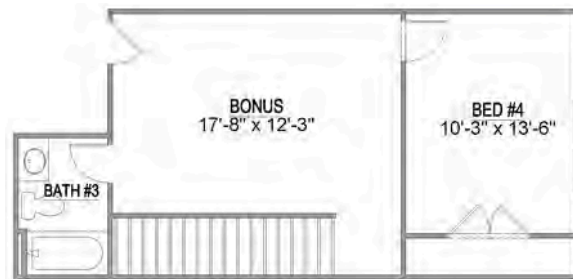
- Large Bonus Room
- Walk-in Attic Storage



## 2<sup>nd</sup> Floor Options



Optional 3rd Bathroom



Optional 3rd Bathroom and 4th Bedroom



Optional Alternate 4th Bedroom and 3rd Bathroom

Saddlebrook Properties, LLC uses pictures, elevations and floor plans for illustrative marketing purposes only. Saddlebrook's working construction documents & codes take precedent in guiding the constructions of each home. Measurements, prices and specifications are subject to change without notice. All offerings are subject to errors and omissions.



# MARTIN



## Home Features



4-5  
Bedrooms



2.5-4  
Bathrooms



3  
Garage Bays

## Square Footage

**Total Living Area** 2,990+ Sq. Ft.

**1st Floor** 1,915+ Sq. Ft.

**2nd Floor** 1,075+ Sq. Ft.

## Contact



865-966-8700



[info@saddlebrookproperties.com](mailto:info@saddlebrookproperties.com)



[saddlebrookproperties.com](http://saddlebrookproperties.com)

## Social



Saddlebrook Properties, LLC uses pictures, elevations and floor plans for illustrative marketing purposes only. Saddlebrook's working construction documents & codes take precedent in guiding the constructions of each home. Measurements, prices and specifications are subject to change without notice. All offerings are subject to errors and omissions.



## 1<sup>st</sup> Floor

### Key Features

- Open Concept Living
- Owner's Suite on Main
- Two Story Great Room & Foyer
- Gourmet Kitchen with Adjoining Dining Room
- Flex Room
- Walk-in Pantry
- Powder Room
- 3rd Bay Garage



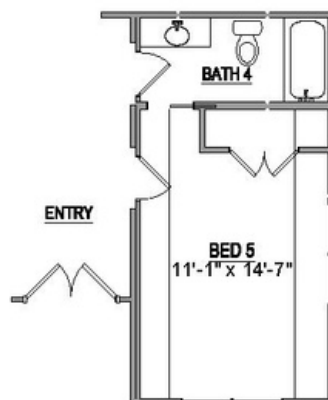
## 1<sup>st</sup> Floor Options



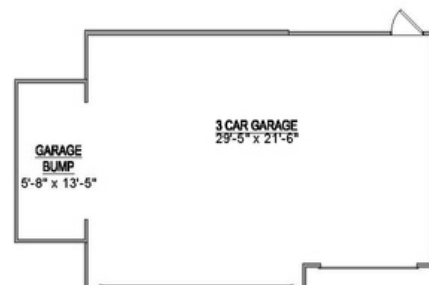
Optional Covered Porch



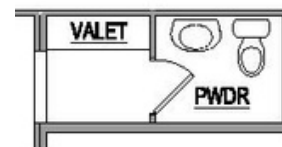
Optional Screened Porch



Optional 5th Bedroom  
and 4th Bathroom



Optional Garage Bump



Optional Valet

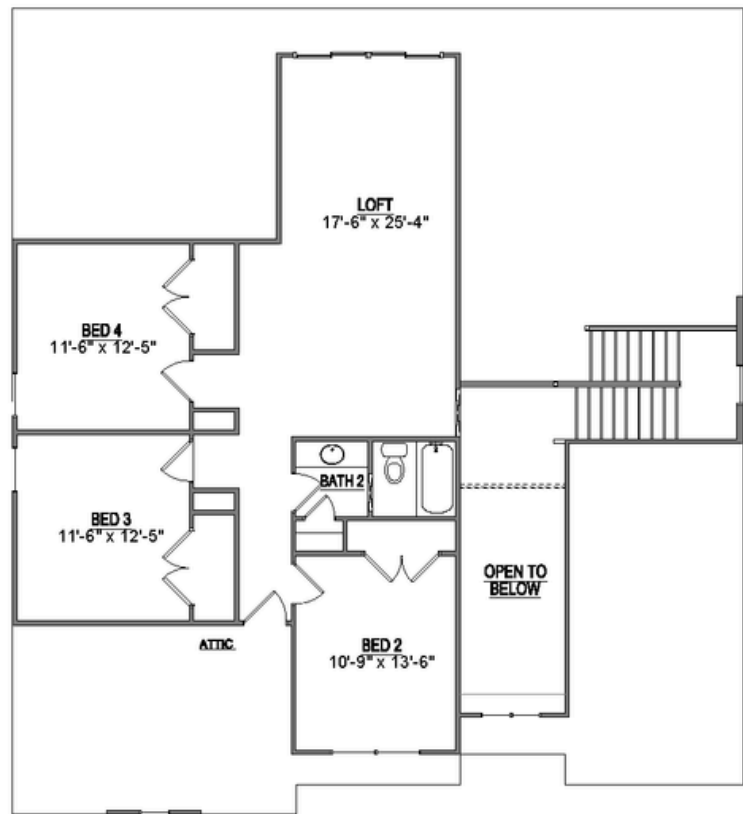
Saddlebrook Properties, LLC uses pictures, elevations and floor plans for illustrative marketing purposes only. Saddlebrook's working construction documents & codes take precedent in guiding the constructions of each home. Measurements, prices and specifications are subject to change without notice. All offerings are subject to errors and omissions.



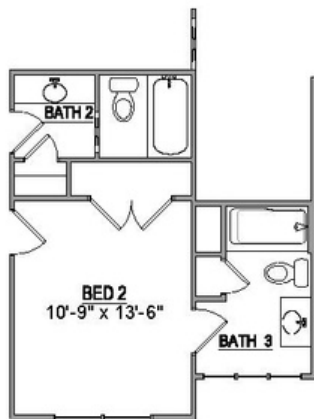
## 2<sup>nd</sup> Floor

### Key Features

- Spacious Loft
- 3 Bedrooms
- 1 Full Bathroom
- Walk-in Attic



## 2<sup>nd</sup> Floor Options



Optional 3rd Bathroom

Saddlebrook Properties, LLC uses pictures, elevations and floor plans for illustrative marketing purposes only. Saddlebrook's working construction documents & codes take precedent in guiding the constructions of each home. Measurements, prices and specifications are subject to change without notice. All offerings are subject to errors and omissions.



# OXFORD

---



## EUROPEAN



## FARMHOUSE



## FRENCH COUNTRY

## Home Features

---



4-5  
Bedrooms



3-4  
Bathrooms



3  
Garage Bays

## Square Footage

---

**Total Living Area** 3237+ Sq. Ft.

**1st Floor** 2098+ Sq. Ft.

**2nd Floor** 1139+ Sq. Ft.

## Contact

---



865-966-8700



[info@saddlebrookproperties.com](mailto:info@saddlebrookproperties.com)



[saddlebrookproperties.com](http://saddlebrookproperties.com)

## Social

---



Saddlebrook Properties, LLC uses pictures, elevations and floor plans for illustrative marketing purposes only. Saddlebrook's working construction documents & codes take precedent in guiding the constructions of each home. Measurements, prices and specifications are subject to change without notice. All offerings are subject to errors and omissions



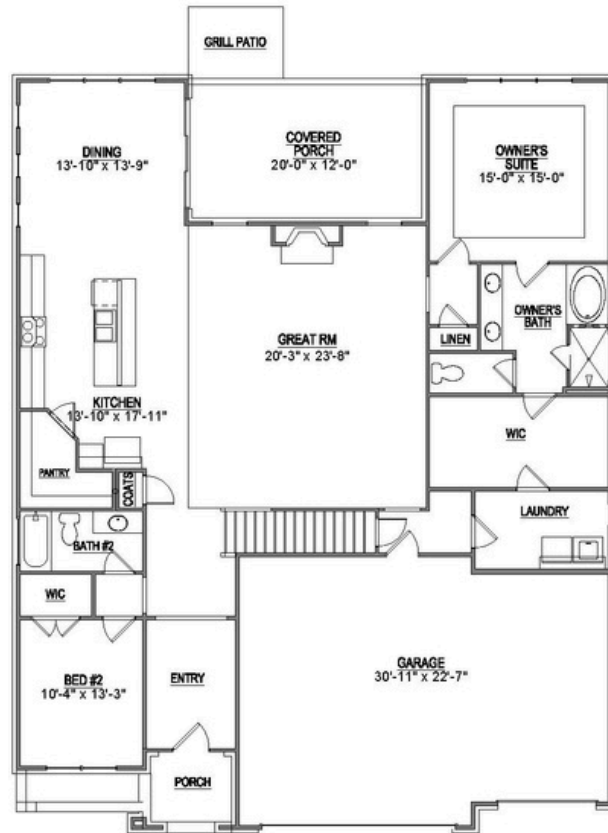
# OXFORD



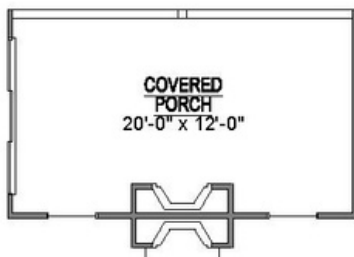
## 1<sup>st</sup> Floor

### Key Features

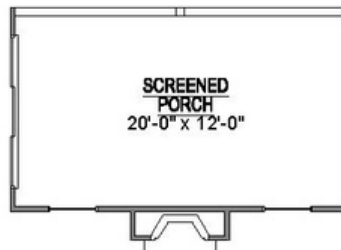
- 3-Car Garage
- Dramatic 2-Story Entry
- Owner's Suite with Spa-Inspired Ensuite
- Private Covered Porch Retreat
- Grand 10' Ceilings with 8' Doorways
- Main-Level Guest Suite
- Chef-Inspired Kitchen



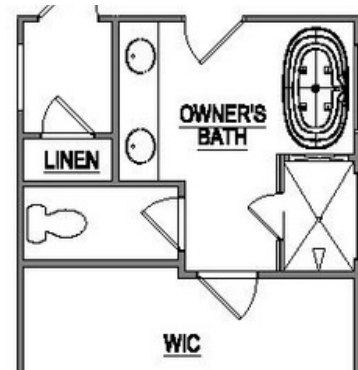
## 1<sup>st</sup> Floor Options



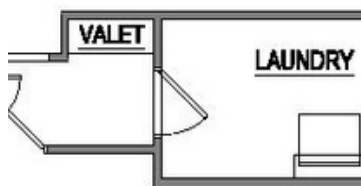
Optional Outdoor  
Fireplace



Optional Screened  
Porch



Optional Deluxe  
Owners Bath



Optional Valet

Saddlebrook Properties, LLC uses pictures, elevations and floor plans for illustrative marketing purposes only. Saddlebrook's working construction documents & codes take precedent in guiding the constructions of each home. Measurements, prices and specifications are subject to change without notice. All offerings are subject to errors and omissions.



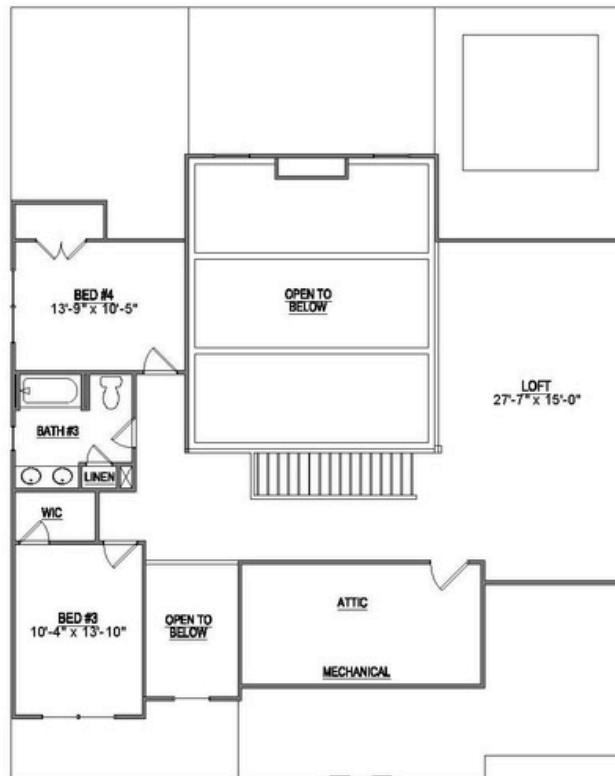
# OXFORD



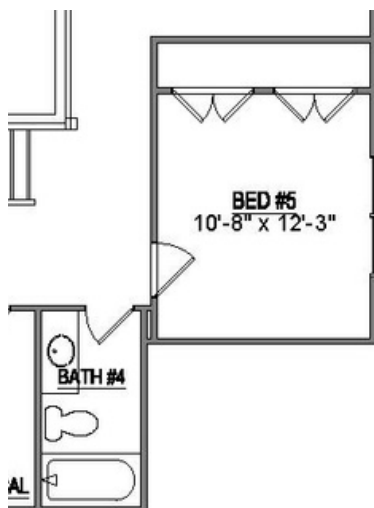
## 2<sup>nd</sup> Floor

### Key Features

- Expansive Loft Area
- Generous Attic Storage
- 2 Bedrooms
- 1 Bathroom



## 2<sup>nd</sup> Floor Options



Optional Bed 5  
& Bath 4

Saddlebrook Properties, LLC uses pictures, elevations and floor plans for illustrative marketing purposes only. Saddlebrook's working construction documents & codes take precedent in guiding the constructions of each home. Measurements, prices and specifications are subject to change without notice. All offerings are subject to errors and omissions.



# STAFFORD

---



EUROPEAN



FARMHOUSE



FRENCH COUNTRY

## Home Features

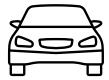
---



4-6  
Bedrooms



3-4  
Bathrooms



3  
Garage Bays

## Square Footage

---

**Total Living Area** 3147+ Sq. Ft.

**1st Floor** 2112+ Sq. Ft.

**2nd Floor** 1035+ Sq. Ft.

## Contact

---



865-966-8700



[info@saddlebrookproperties.com](mailto:info@saddlebrookproperties.com)



[saddlebrookproperties.com](http://saddlebrookproperties.com)

## Social

---



Saddlebrook Properties, LLC uses pictures, elevations and floor plans for illustrative marketing purposes only. Saddlebrook's working construction documents & codes take precedent in guiding the constructions of each home. Measurements, prices and specifications are subject to change without notice. All offerings are subject to errors and omissions



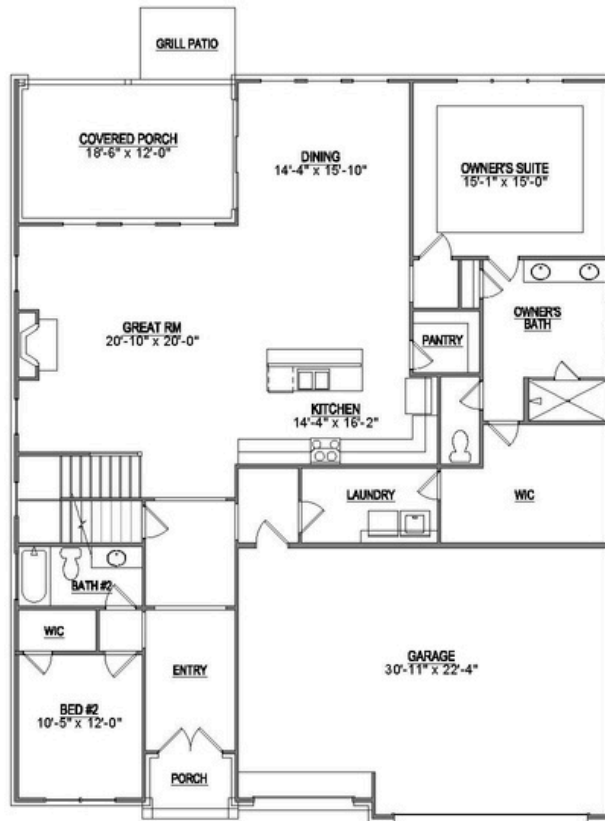
# STAFFORD



## 1<sup>st</sup> Floor

### Key Features

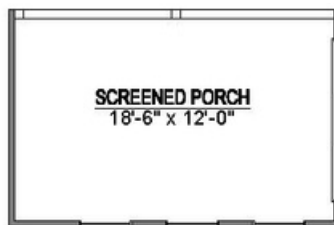
- 3-Car Garage
- Private Main-Level Owner's Suite
- Private Covered Porch Retreat
- Grand 10' Ceilings with 8' Doorways
- Main-Level Guest Suite
- Open Concept Living and Entertaining Spaces



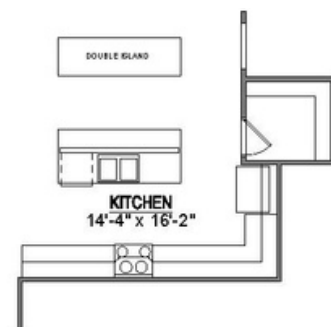
## 1<sup>st</sup> Floor Options



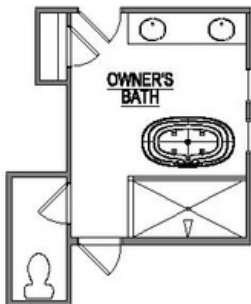
Optional Outdoor  
Fireplace



Optional Screened  
Porch



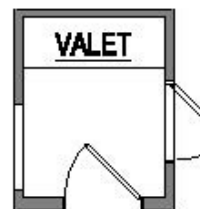
Optional  
Double Island



Optional Deluxe  
Owners Bath



Optional Utility  
Sink



Optional Valet

Saddlebrook Properties, LLC uses pictures, elevations and floor plans for illustrative marketing purposes only. Saddlebrook's working construction documents & codes take precedent in guiding the constructions of each home. Measurements, prices and specifications are subject to change without notice. All offerings are subject to errors and omissions.



# STAFFORD



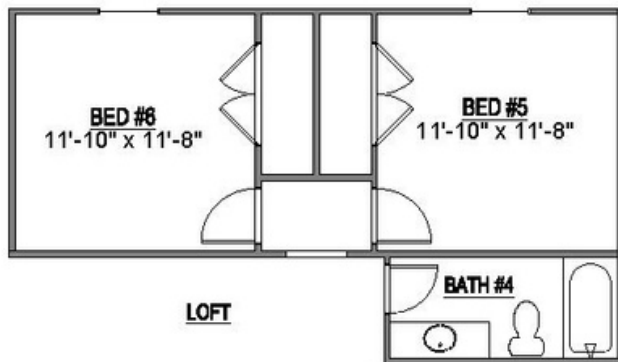
## 2<sup>nd</sup> Floor

### Key Features

- Versatile and Spacious Loft Area
- Generous Attic Storage for Seasonal Items and More
- 2 Bedrooms
- 1 Bathroom



## 2<sup>nd</sup> Floor Options



Optional Bed 5, Bed 6 &  
Bath 4

Saddlebrook Properties, LLC uses pictures, elevations and floor plans for illustrative marketing purposes only. Saddlebrook's working construction documents & codes take precedent in guiding the constructions of each home. Measurements, prices and specifications are subject to change without notice. All offerings are subject to errors and omissions.



# WINCHESTER



EUROPEAN



FARMHOUSE

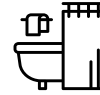


FRENCH COUNTRY

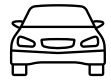
## Home Features



4-5  
Bedrooms



4  
Bathrooms



3  
Garage Bays

## Square Footage

**Total Living Area** 3277+ Sq. Ft.

**1st Floor** 2206+ Sq. Ft.

**2nd Floor** 1071+ Sq. Ft.

## Contact



865-966-8700



[info@saddlebrookproperties.com](mailto:info@saddlebrookproperties.com)



[saddlebrookproperties.com](http://saddlebrookproperties.com)

## Social



Saddlebrook Properties, LLC uses pictures, elevations and floor plans for illustrative marketing purposes only. Saddlebrook's working construction documents & codes take precedent in guiding the constructions of each home. Measurements, prices and specifications are subject to change without notice. All offerings are subject to errors and omissions



# WINCHESTER



## 1<sup>st</sup> Floor

### Key Features

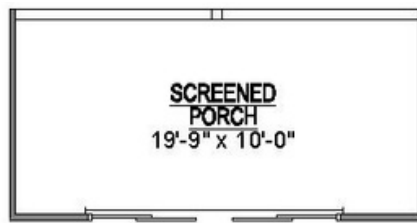
- 3-Car Garage
- Grand 2-Story Naturally Lit Entryway
- Private Covered Porch Retreat
- Eye-Catching Ceiling Detail in Great Room
- Luxurious Ensuite
- Main Level Guest Suite
- Dedicated Study



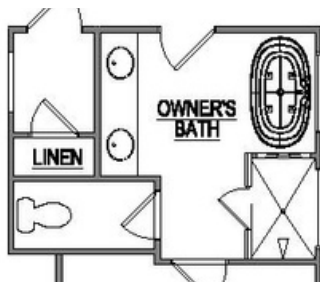
## 1<sup>st</sup> Floor Options



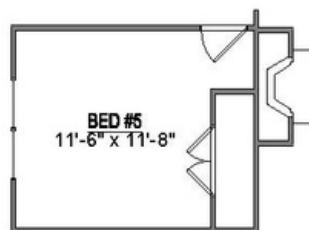
Optional Outdoor  
Fireplace



Optional Screened  
Porch



Optional Deluxe  
Owners Bath



Optional Bed 5



Optional Coffee  
Bar

Saddlebrook Properties, LLC uses pictures, elevations and floor plans for illustrative marketing purposes only. Saddlebrook's working construction documents & codes take precedent in guiding the constructions of each home. Measurements, prices and specifications are subject to change without notice. All offerings are subject to errors and omissions.



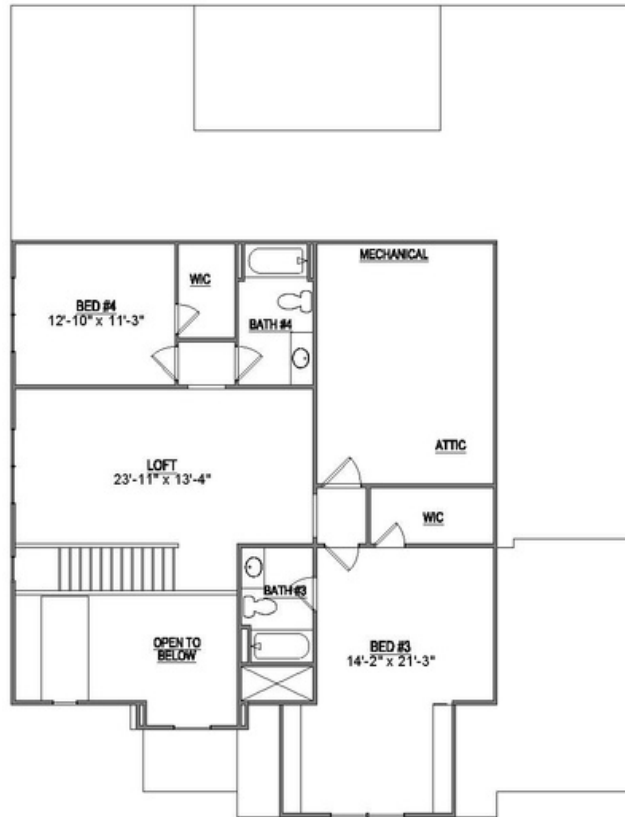
# WINCHESTER



## 2<sup>nd</sup> Floor

### Key Features

- Central Loft Area
- Generous Attic Storage
- 2 Bedrooms
- 2 Bathroom



## 2<sup>nd</sup> Floor Options

Saddlebrook Properties, LLC uses pictures, elevations and floor plans for illustrative marketing purposes only. Saddlebrook's working construction documents & codes take precedent in guiding the constructions of each home. Measurements, prices and specifications are subject to change without notice. All offerings are subject to errors and omissions.