

EMORY



EUROPEAN



FARMHOUSE



FRENCH COUNTRY

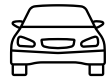
Home Features



4-5
Bedrooms



3-4
Bathrooms



3
Garage Bays

Square Footage

Total Living Area 3133+ Sq. Ft.

1st Floor 1977+ Sq. Ft.

2nd Floor 1136+ Sq. Ft.

Contact



865-966-8700



info@saddlebrookproperties.com



saddlebrookproperties.com

Social

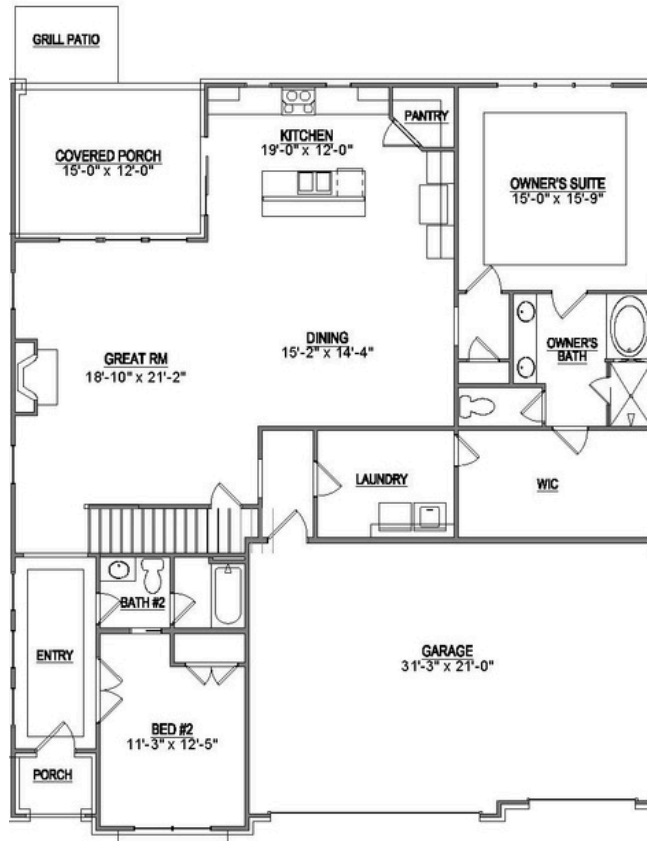


Saddlebrook Properties, LLC uses pictures, elevations and floor plans for illustrative marketing purposes only. Saddlebrook's working construction documents & codes take precedent in guiding the constructions of each home. Measurements, prices and specifications are subject to change without notice. All offerings are subject to errors and omissions

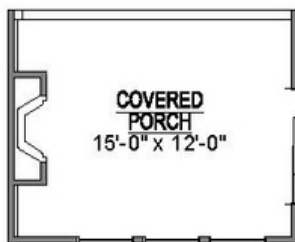
1st Floor

Key Features

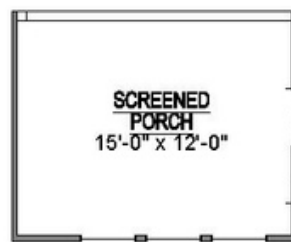
- 3-Car Garage
- Luxurious Main-Level Owner's Suite
- Private Covered Porch Retreat
- Grand 10' Ceilings with 8' Doorways
- Main-Level Guest Suite



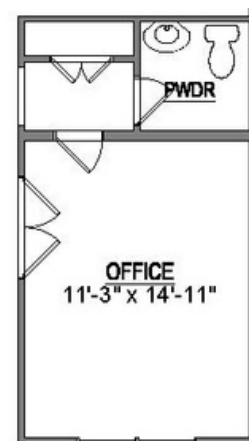
1st Floor Options



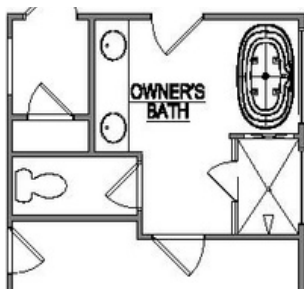
Optional Outdoor
Fireplace



Optional Screened
Porch



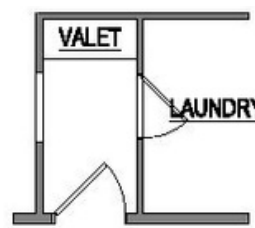
Optional Office
& Powder Rm



Optional Deluxe
Owners Bath



Optional Utility
Sink



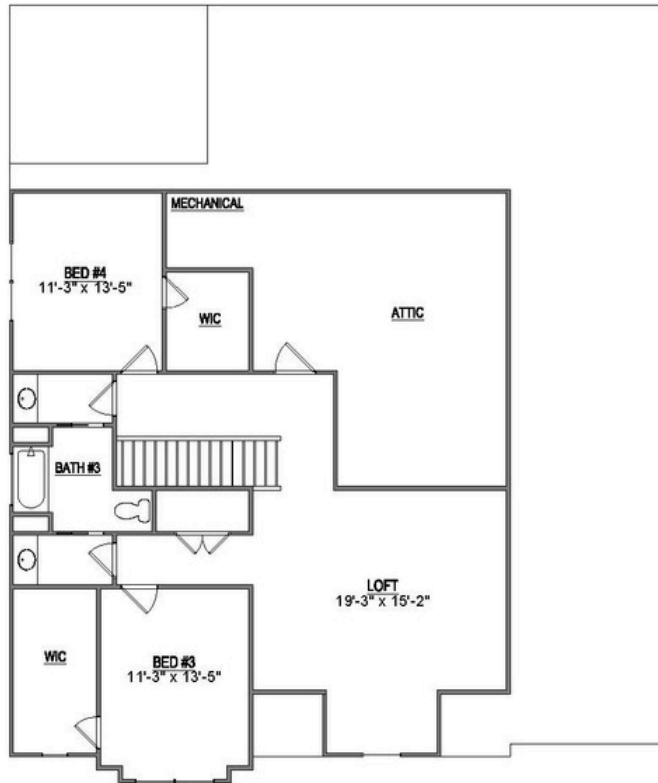
Optional Valet

Saddlebrook Properties, LLC uses pictures, elevations and floor plans for illustrative marketing purposes only. Saddlebrook's working construction documents & codes take precedent in guiding the constructions of each home. Measurements, prices and specifications are subject to change without notice. All offerings are subject to errors and omissions.

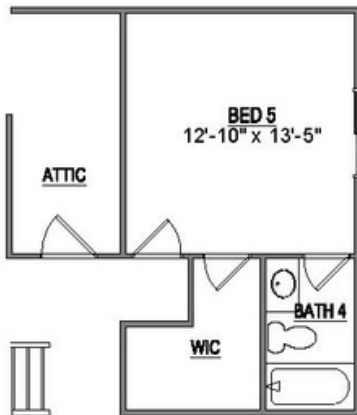
2nd Floor

Key Features

- Expansive Loft Area
- Generous Attic Storage
- 2 Bedrooms
- 1 Bathroom



2nd Floor Options



Optional Bed 5 & Bath 4