

STAFFORD



EUROPEAN



FARMHOUSE



FRENCH COUNTRY

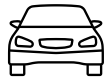
Home Features



4-6
Bedrooms



3-4
Bathrooms



3
Garage Bays

Square Footage

Total Living Area 3147+ Sq. Ft.

1st Floor 2112+ Sq. Ft.

2nd Floor 1035+ Sq. Ft.

Contact



865-966-8700



info@saddlebrookproperties.com



saddlebrookproperties.com

Social



Saddlebrook Properties, LLC uses pictures, elevations and floor plans for illustrative marketing purposes only. Saddlebrook's working construction documents & codes take precedent in guiding the constructions of each home. Measurements, prices and specifications are subject to change without notice. All offerings are subject to errors and omissions

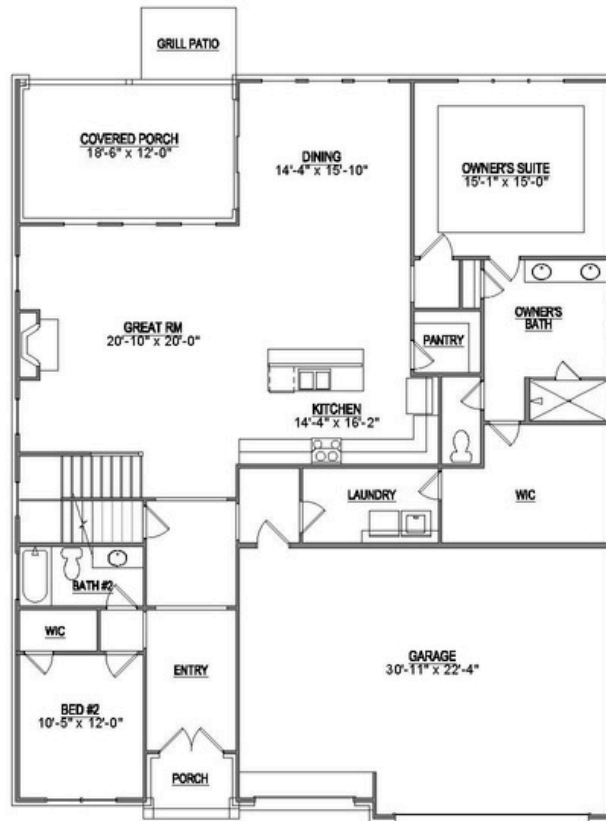
STAFFORD



1st Floor

Key Features

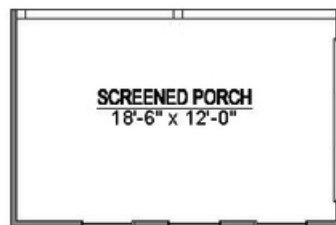
- 3-Car Garage
- Private Main-Level Owner's Suite
- Private Covered Porch Retreat
- Grand 10' Ceilings with 8' Doorways
- Main-Level Guest Suite
- Open Concept Living and Entertaining Spaces



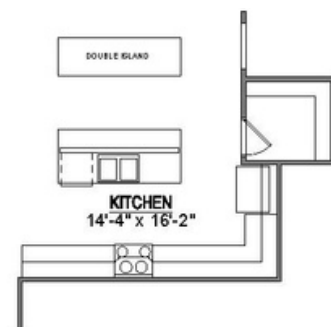
1st Floor Options



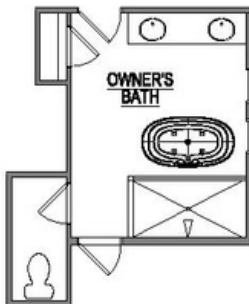
Optional Outdoor
Fireplace



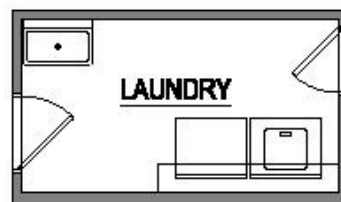
Optional Screened
Porch



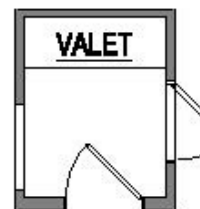
Optional
Double Island



Optional Deluxe
Owners Bath



Optional Utility
Sink



Optional Valet

Saddlebrook Properties, LLC uses pictures, elevations and floor plans for illustrative marketing purposes only. Saddlebrook's working construction documents & codes take precedent in guiding the constructions of each home. Measurements, prices and specifications are subject to change without notice. All offerings are subject to errors and omissions.

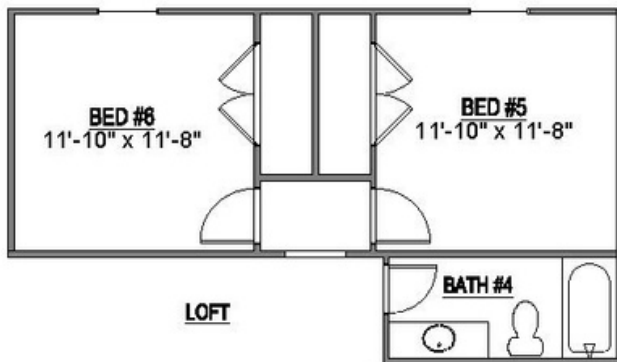
2nd Floor

Key Features

- Versatile and Spacious Loft Area
- Generous Attic Storage for Seasonal Items and More
- 2 Bedrooms
- 1 Bathroom



2nd Floor Options



Optional Bed 5, Bed 6 &
Bath 4