

THE
GROVE
AT BOYD STATION

COMMUNITY GUIDE

ABOUT

Perched on a hilltop, The Grove at Boyd Station is a luxury Farragut community offering gorgeous scenic views. As you arrive at The Grove, you will be greeted by the breathtaking blue hues of the Smoky Mountains, with distinctive silhouettes of iconic mountain peaks from some of East Tennessee's renowned hiking trails on the horizon. Below, you will find the tranquil waters of Fort Loudoun Lake on the Tennessee River.

This Farragut community features our latest and most versatile floor plans, catering to a wide range of preferences. Luxury homes, complete with expandable garages, grace the highest points of the landscape. Downhill is the beautifully landscaped pool area and amenity center, offering spaces for gathering and relaxation under the shade of trees. The Grove at Boyd Station has been meticulously designed for both families and friends to cherish for years to come.

AMENITIES

- Prime Farragut location across from McFee Park and close to Farragut Greenway Trails
- Beautiful landscaping and an expansive amenities package with a community pool, clubhouse, open-air pavilion, well-lit sidewalks, and streetlights
- 14 designer floor plans ranging from 2,300–3,500 square feet with 3-car garages available
- Luxurious interior features including full brick and stone exteriors, sodded lawns, and an irrigation system
- Convenient access to the interstate, Turkey Creek shopping, restaurants, lake access, golf courses, scenic parks, and award-winning Farragut schools

CONTACT US

ADMIRAL



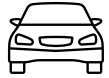
Home Features



3-5
Bedrooms



3.5-5
Bathrooms



2-3
Garage Bays

Square Footage

Total Living Area 3,522+ Sq. Ft.

1st Floor 1,980+ Sq. Ft.

2nd Floor 1,542+ Sq. Ft.

Contact



865-966-8700



info@saddlebrookproperties.com



saddlebrookproperties.com

Social



Saddlebrook Properties, LLC uses pictures, elevations and floor plans for illustrative marketing purposes only. Saddlebrook's working construction documents & codes take precedent in guiding the constructions of each home. Measurements, prices and specifications are subject to change without notice. All offerings are subject to errors and omissions

ADMIRAL



1st Floor

Key Features

- Courtyard Entry Garage
- Coffered Ceiling in Great Room
- Owner's Suite on Main level
- Formal Dining & Casual Dining Space
- Generous Open Concept Living Space
- Powder Room



1st Floor Options



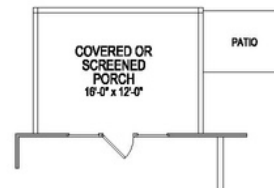
Optional Rear
Fireplace



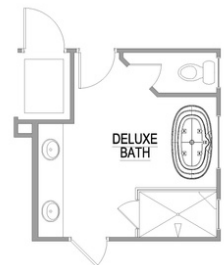
Optional 4th Bedroom
and Bathroom



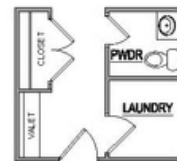
Optional 3rd
Garage Bay



Optional Screened or
Covered Porch



Optional Deluxe
Bath



Optional Valet



Optional Butlers
Pantry

Saddlebrook Properties, LLC uses pictures, elevations and floor plans for illustrative marketing purposes only. Saddlebrook's working construction documents & codes take precedent in guiding the constructions of each home. Measurements, prices and specifications are subject to change without notice. All offerings are subject to errors and omissions.

ADMIRAL



2nd Floor

Key Features

- Spacious Loft
- Designated Office Space
- Generous Bonus Room
- 2 Bedrooms w/ 2 Dedicated Full Baths
- Walk-in Attic



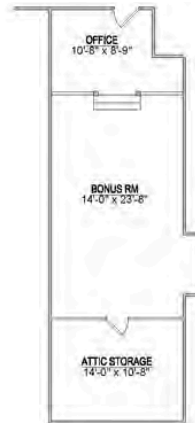
2nd Floor Options



Optional 4th Bedroom
and Bathroom



Optional Two Story
Great Room



Optional 3rd Bay
Bonus Rm



Optional 3rd Bay
Bonus Rm Finished Attic

Saddlebrook Properties, LLC uses pictures, elevations and floor plans for illustrative marketing purposes only. Saddlebrook's working construction documents & codes take precedent in guiding the constructions of each home. Measurements, prices and specifications are subject to change without notice. All offerings are subject to errors and omissions.

AIKEN



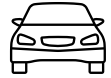
Home Features



3-5
Bedrooms



2.5-3.5
Bathrooms



2-3
Garage Bays

Square Footage

Total Living Area 2,917+ Sq. Ft.

1st Floor 2,079+ Sq. Ft.

2nd Floor 839+ Sq. Ft.

Contact



865-966-8700



info@saddlebrookproperties.com



saddlebrookproperties.com

Social



Saddlebrook Properties, LLC uses pictures, elevations and floor plans for illustrative marketing purposes only. Saddlebrook's working construction documents & codes take precedent in guiding the constructions of each home. Measurements, prices and specifications are subject to change without notice. All offerings are subject to errors and omissions. Last Revision Date: 04.16.18

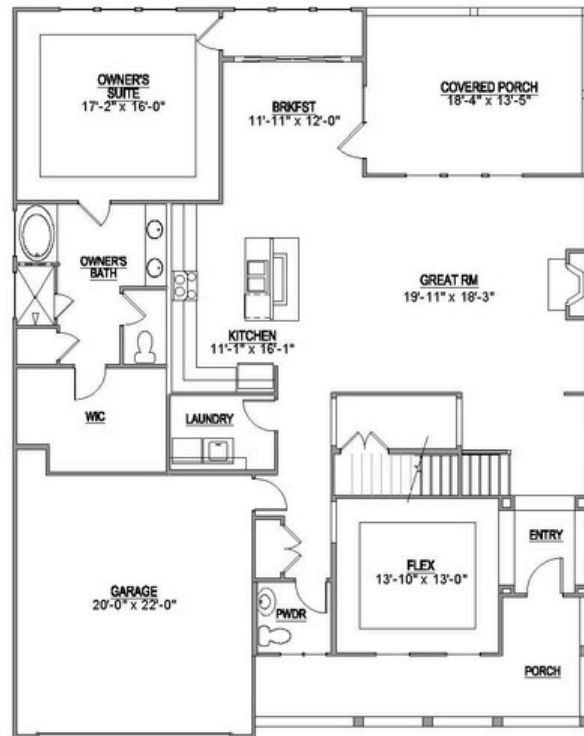
AIKEN



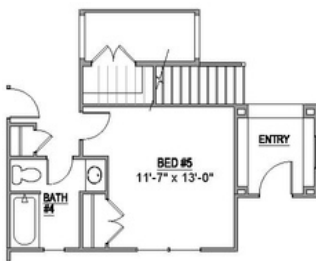
1st Floor

Key Features

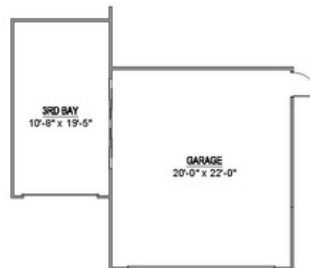
- Large Front Porch
- Open Concept Living
- Owner's Suite on Main
- Flex Room
- Casual Dining Area
- Walk-in pantry
- Main level laundry
- Covered Porch
- Powder Room



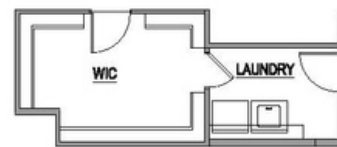
1st Floor Options



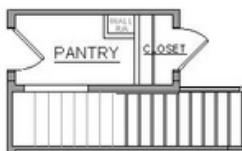
Optional 5th Bedroom
Instead of Flex Room



Optional 3rd Garage Bay



Optional Laundry Access From
Owner's Suite Walk-In Closet



Optional Extended Pantry

Saddlebrook Properties, LLC uses pictures, elevations and floor plans for illustrative marketing purposes only. Saddlebrook's working construction documents & codes take precedent in guiding the constructions of each home. Measurements, prices and specifications are subject to change without notice. All offerings are subject to errors and omissions.

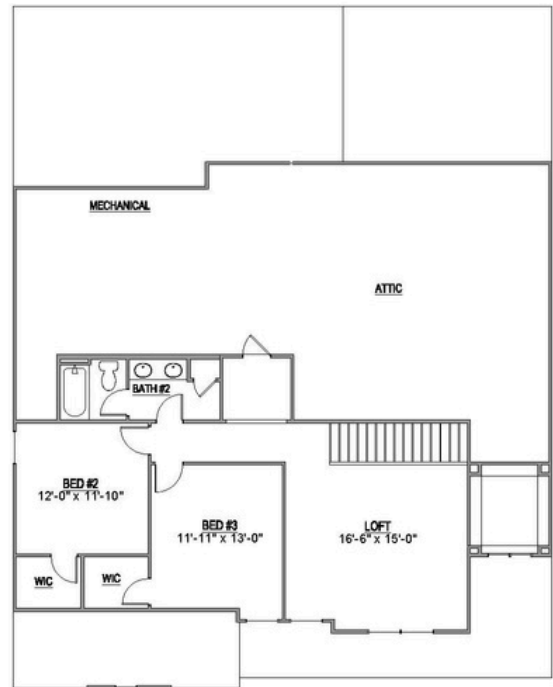
AIKEN



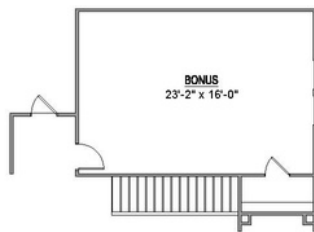
2nd Floor

Key Features

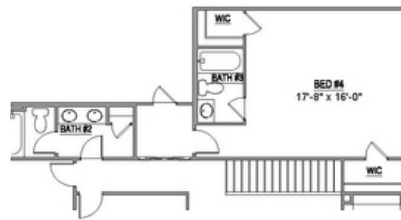
- Spacious Loft
- Expansive Walk-in Attic
- 2 Full Bedrooms w/ Walk-in Closets
- 1 Full Bathroom



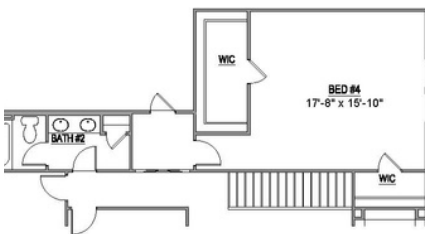
2nd Floor Options



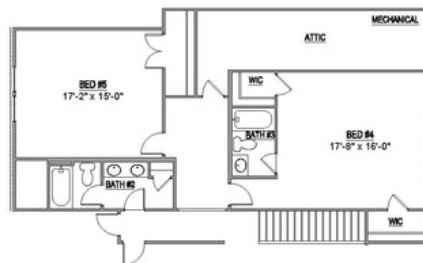
Optional Bonus Room



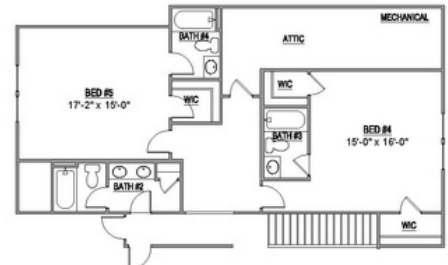
Optional 4th Bedroom and 3rd Bathroom



Optional 4th Bedroom
with Walk-In Closet



Optional 4th and 5th Bedroom
with 3rd Bathroom



Optional 4th and 5th Bedroom
with 3rd Bathroom

Saddlebrook Properties, LLC uses pictures, elevations and floor plans for illustrative marketing purposes only. Saddlebrook's working construction documents & codes take precedent in guiding the constructions of each home. Measurements, prices and specifications are subject to change without notice. All offerings are subject to errors and omissions.

ALDERWOOD



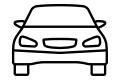
Home Features



4-5
Bedrooms



2.5-3.5
Bathrooms



2-3
Garage Bays

Square Footage

Total Living Area 2,833+ Sq. Ft.

1st Floor 1,578+ Sq. Ft.

2nd Floor 1,255+ Sq. Ft.

Contact



865-966-8700



info@saddlebrookproperties.com



saddlebrookproperties.com

Social



Saddlebrook Properties, LLC uses pictures, elevations and floor plans for illustrative marketing purposes only. Saddlebrook's working construction documents & codes take precedent in guiding the constructions of each home. Measurements, prices and specifications are subject to change without notice. All offerings are subject to errors and omissions.

ALDERWOOD



1st Floor

Key Features

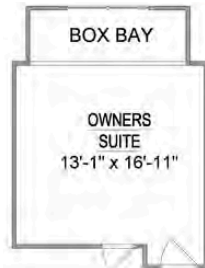
- Inviting Front Porch
- Open Concept Living
- Owner's Suite on Main
- Flex Room
- Large Eat-in Kitchen
- Oversized Walk-in Shower in Owner's Bathroom
- 2 Story Great Room & Foyer
- Powder Room



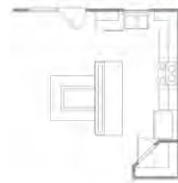
1st Floor Options



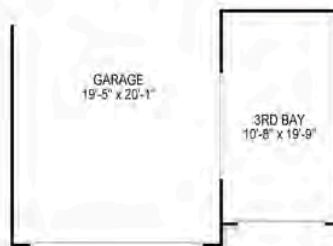
Optional Deluxe Bathroom



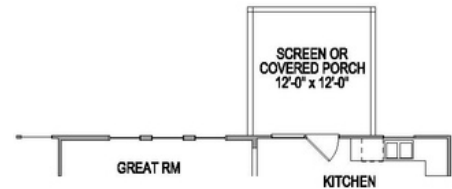
Optional Box Bay



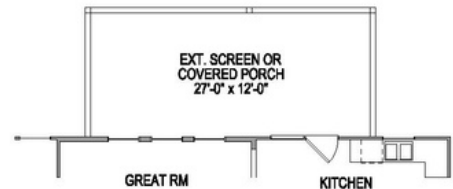
Optional Kitchen Island



Optional 3rd Garage Bay



Optional Screened or Covered Porch



Optional Extended Screened or Covered Porch

Saddlebrook Properties, LLC uses pictures, elevations and floor plans for illustrative marketing purposes only. Saddlebrook's working construction documents & codes take precedent in guiding the constructions of each home. Measurements, prices and specifications are subject to change without notice. All offerings are subject to errors and omissions. Last Revision Date: 04.16.18

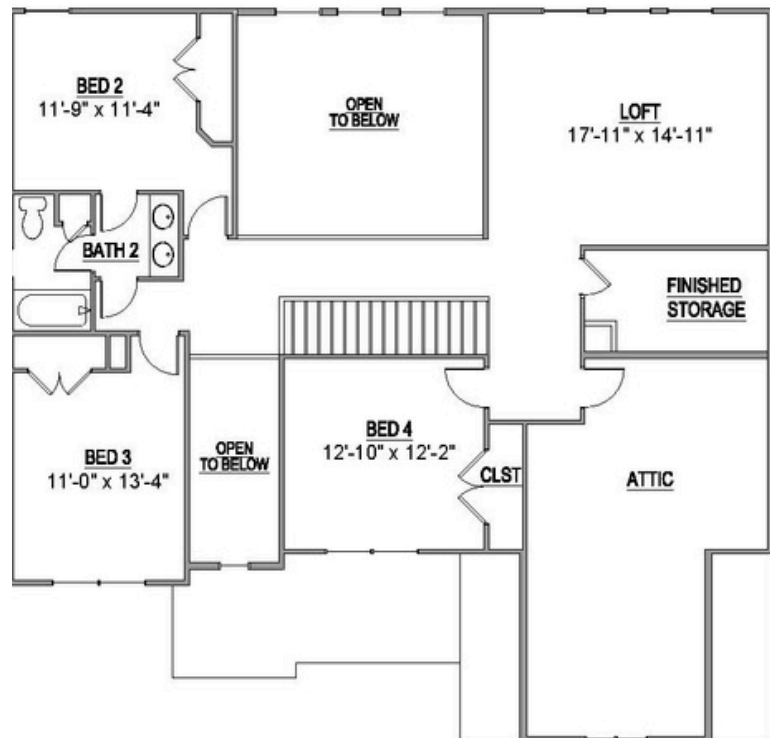
ALDERWOOD



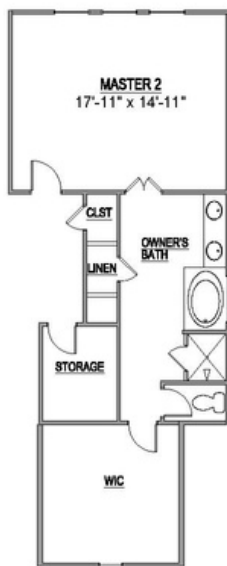
2nd Floor

Key Features

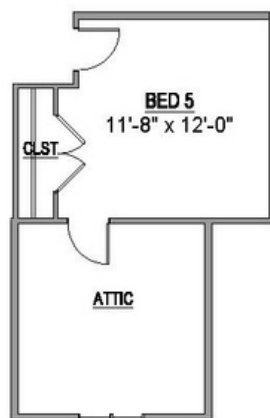
- Spacious Loft
- Finished Storage
- Walk-in Attic
- 3 Bedrooms
- 1 Full Bathroom



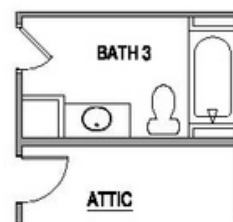
2nd Floor Options



Optional 2nd
Master Suite



Optional 5th Bedroom



Optional 3rd Bathroom

Saddlebrook Properties, LLC uses pictures, elevations and floor plans for illustrative marketing purposes only. Saddlebrook's working construction documents & codes take precedent in guiding the constructions of each home. Measurements, prices and specifications are subject to change without notice. All offerings are subject to errors and omissions.

ASPEN



EUROPEAN



FARMHOUSE



TRADITIONAL



OLD WORLD

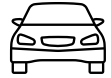
Home Features



4-5
Bedrooms



3.5-4.5
Bathrooms



2-3
Garage Bays

Square Footage

Total Living Area 3,194+ Sq. Ft.

1st Floor 2,185+ Sq. Ft.

2nd Floor 1,009+ Sq. Ft.

Contact



865-966-8700



info@saddlebrookproperties.com



saddlebrookproperties.com

Social



Saddlebrook Properties, LLC uses pictures, elevations and floor plans for illustrative marketing purposes only. Saddlebrook's working construction documents & codes take precedent in guiding the constructions of each home. Measurements, prices and specifications are subject to change without notice. All offerings are subject to errors and omissions.

ASPEN



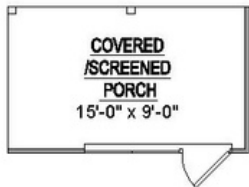
1st Floor

Key Features

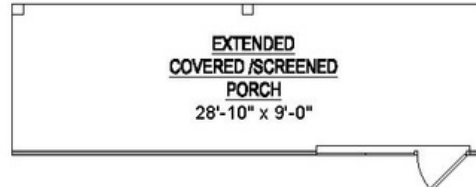
- Open Concept Living
- Owner's Suite on Main
- Double Walk-In Closets in Owner's Suite
- Flex Room
- Large Walk-in Pantry
- Secondary Bed/Beth on Main
- Mud room w/ Easy access to Laundry Room
- Powder Room



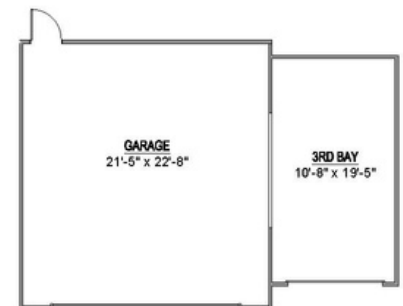
1st Floor Options



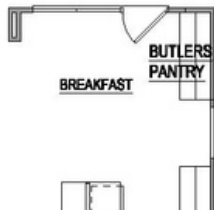
Optional Covered or Screened Porch



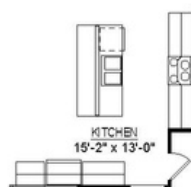
Optional Extended Covered or Screened Porch



Optional 3rd Garage Bay



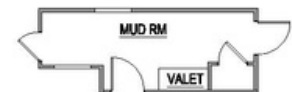
Optional Butlers Pantry



Optional Kitchen Cabinets



Optional Kitchen Pantry



Optional Valet

Saddlebrook Properties, LLC uses pictures, elevations and floor plans for illustrative marketing purposes only. Saddlebrook's working construction documents & codes take precedent in guiding the constructions of each home. Measurements, prices and specifications are subject to change without notice. All offerings are subject to errors and omissions.

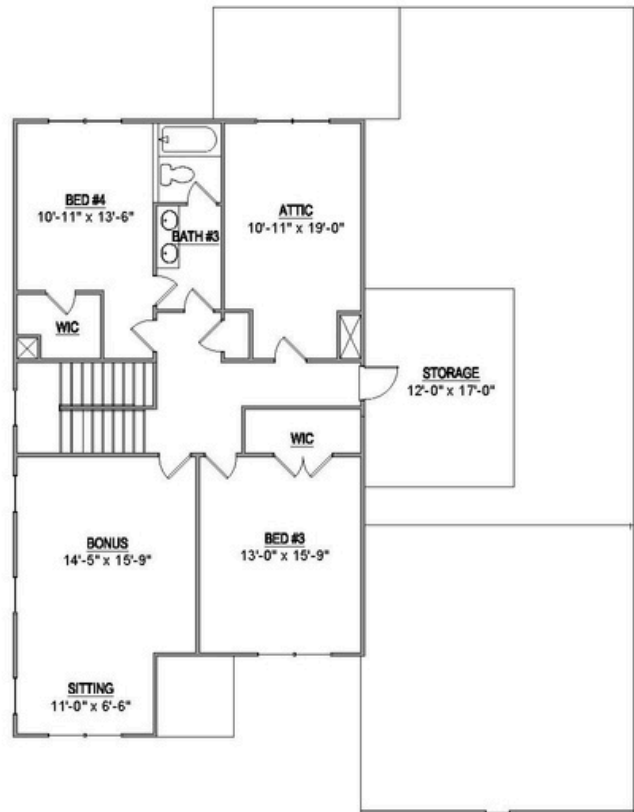
ASPEN



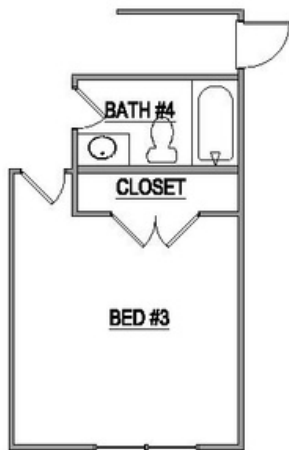
2nd Floor

Key Features

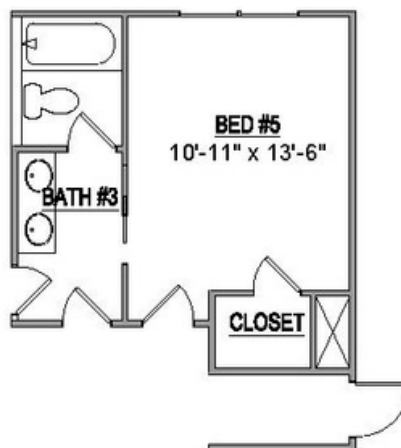
- Bonus Room with Sitting Area
- 2 Bedrooms
- 1 Full Bathroom
- Walk-in Attic Storage



2nd Floor Options



Optional 4th Bathroom



Optional 5th Bedroom

Saddlebrook Properties, LLC uses pictures, elevations and floor plans for illustrative marketing purposes only. Saddlebrook's working construction documents & codes take precedent in guiding the constructions of each home. Measurements, prices and specifications are subject to change without notice. All offerings are subject to errors and omissions.

ESSEX



Home Features



4-5
Bedrooms



2.5-4.5
Bathrooms



3
Garage Bays

Square Footage

Total Living Area 3,103+ Sq. Ft.

1st Floor 2,127+ Sq. Ft.

2nd Floor 976+ Sq. Ft.

Contact



865-966-8700



info@saddlebrookproperties.com



saddlebrookproperties.com

Social



Saddlebrook Properties, LLC uses pictures, elevations and floor plans for illustrative marketing purposes only. Saddlebrook's working construction documents & codes take precedent in guiding the constructions of each home. Measurements, prices and specifications are subject to change without notice. All offerings are subject to errors and omissions.

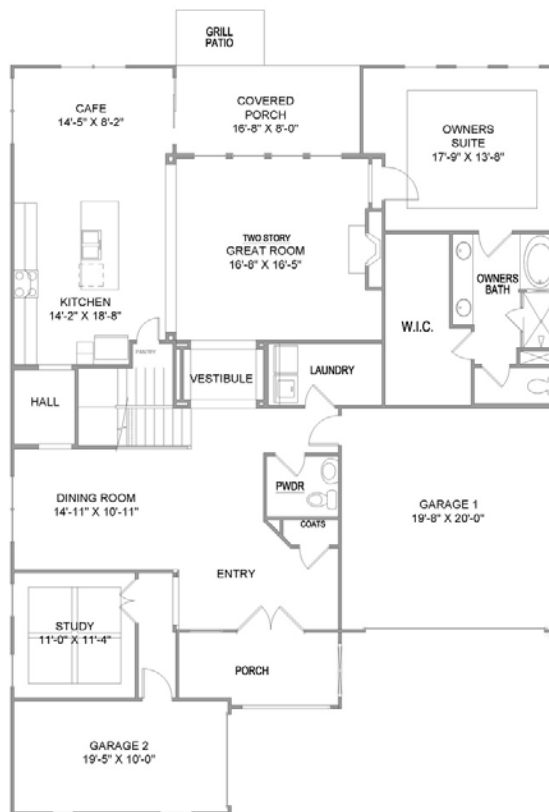
ESSEX



1st Floor

Key Features

- Front Porch
- Two Story Great Room
- Owner's Suite on Main
- Formal Dining Room
- Casual Cafe Dining Area
- Designated Study
- Powder Room
- Covered Porch and Grill Patio
- 3rd Bay Garage



1st Floor Options



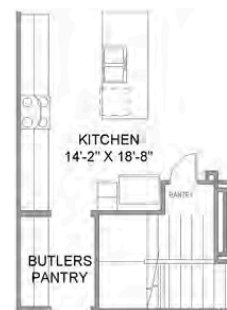
Optional Sunroom



Optional Screened Porch



Optional Walk-In-Closet
Door to Laundry



Optional Butlers Pantry



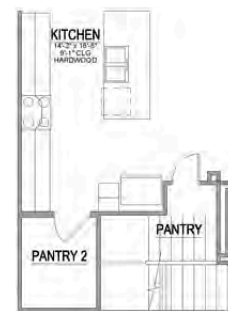
Optional Covered
Extended Porch



Optional 5th
Bedroom Suite



Optional Deluxe
Owner's Bathroom



Optional 2nd Pantry

Optional Extended Great Room

Saddlebrook Properties, LLC uses pictures, elevations and floor plans for illustrative marketing purposes only. Saddlebrook's working construction documents & codes take precedent in guiding the constructions of each home. Measurements, prices and specifications are subject to change without notice. All offerings are subject to errors and omissions.

ESSEX



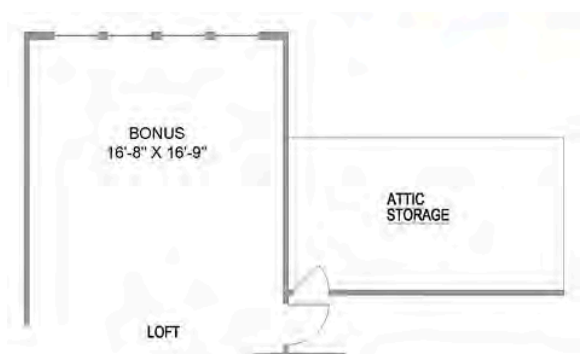
2nd Floor

Key Features

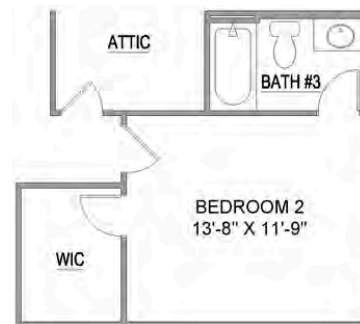
- Spacious Loft Open to Great Room Below
- Walk-in Attic



2nd Floor Options



Optional Bonus Room



Optional 3rd Bathroom

Saddlebrook Properties, LLC uses pictures, elevations and floor plans for illustrative marketing purposes only. Saddlebrook's working construction documents & codes take precedent in guiding the constructions of each home. Measurements, prices and specifications are subject to change without notice. All offerings are subject to errors and omissions.

EVERETT



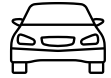
Home Features



4-6
Bedrooms



3.5-4.5
Bathrooms



2-3
Garage Bays

Square Footage

Total Living Area 3,086+ Sq. Ft.

1st Floor 1,847+ Sq. Ft.

2nd Floor 1,239+ Sq. Ft.

Contact



865-966-8700



info@saddlebrookproperties.com



saddlebrookproperties.com

Social



Saddlebrook Properties, LLC uses pictures, elevations and floor plans for illustrative marketing purposes only. Saddlebrook's working construction documents & codes take precedent in guiding the constructions of each home. Measurements, prices and specifications are subject to change without notice. All offerings are subject to errors and omissions.

EVERETT



1st Floor

Key Features

- Open Concept Living
- Front Porch
- Owner's Suite on Main
- Flex Room
- Designer Kitchen
- Walk-in Pantry
- Large Mud Room
- 3rd Bay Garage



1st Floor Options



Optional 3rd Garage Bay
on 2 Car Garage



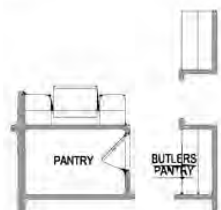
Optional Study
Instead of Garage



Optional 5th Bedroom
and 4th Bathroom



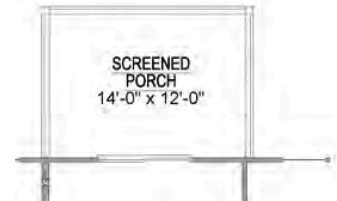
Optional Covered Porch



Optional Butlers Pantry



Optional Valet



Optional Screened Porch

Saddlebrook Properties, LLC uses pictures, elevations and floor plans for illustrative marketing purposes only. Saddlebrook's working construction documents & codes take precedent in guiding the constructions of each home. Measurements, prices and specifications are subject to change without notice. All offerings are subject to errors and omissions.

EVERETT



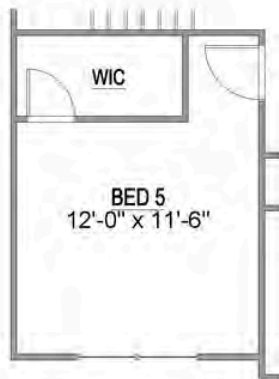
2nd Floor

Key Features

- 3 Bedrooms w/ Walk-in Closets
- 2 Full Baths
- Spacious Loft
- Walk-in Attic Storage



2nd Floor Options



Optional 5th or 6th
Bedroom Instead of Loft

Saddlebrook Properties, LLC uses pictures, elevations and floor plans for illustrative marketing purposes only. Saddlebrook's working construction documents & codes take precedent in guiding the constructions of each home. Measurements, prices and specifications are subject to change without notice. All offerings are subject to errors and omissions.

HARVILLE



Home Features



3-5
Bedrooms



2.5-3.5
Bathrooms



2-3
Garage Bays

Square Footage

Total Living Area 2,862+ Sq. Ft.

1st Floor 2,471+ Sq. Ft.

2nd Floor 391+ Sq. Ft.

Contact



865-966-8700



info@saddlebrookproperties.com



saddlebrookproperties.com

Social



Saddlebrook Properties, LLC uses pictures, elevations and floor plans for illustrative marketing purposes only. Saddlebrook's working construction documents & codes take precedent in guiding the constructions of each home. Measurements, prices and specifications are subject to change without notice. All offerings are subject to errors and omissions.

HARVILLE



1st Floor

Key Features

- Courtyard Entry
- Open Concept Living
- Owner's Suite on Main
- 2 Additional Bedrooms on Main level
- Soaring Ceiling in the Great Room & Kitchen
- Walk-in Pantry
- Flex Room
- Powder Room
- Covered Porch



1st Floor Options



Optional 6th Bedroom
Instead of Flex Room



Optional Valet



Optional Extended Covered Porch



Optional 3rd Garage Bay



Optional Covered
Porch Instead of
Bedroom #2

Saddlebrook Properties, LLC uses pictures, elevations and floor plans for illustrative marketing purposes only. Saddlebrook's working construction documents & codes take precedent in guiding the constructions of each home. Measurements, prices and specifications are subject to change without notice. All offerings are subject to errors and omissions.

HARVILLE



2nd Floor

Key Features

- Large Bonus Room
- Walk-in Attic Storage



2nd Floor Options



Optional 3rd Bathroom



Optional 4th Bedroom
and 3rd Bathroom



Optional 4th Bedroom
and 5th Bedroom and 3rd
Bathroom

Saddlebrook Properties, LLC uses pictures, elevations and floor plans for illustrative marketing purposes only. Saddlebrook's working construction documents & codes take precedent in guiding the constructions of each home. Measurements, prices and specifications are subject to change without notice. All offerings are subject to errors and omissions.

MORGAN



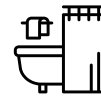
Square Footage

Total Living Area	2,884+ Sq. Ft.
1st Floor	2,193+ Sq. Ft.
2nd Floor	691+ Sq. Ft.

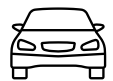
Home Features



3-4
Bedrooms



3
Bathrooms



2-3
Garage Bays

Social



Contact



865-966-8700



info@saddlebrookproperties.com



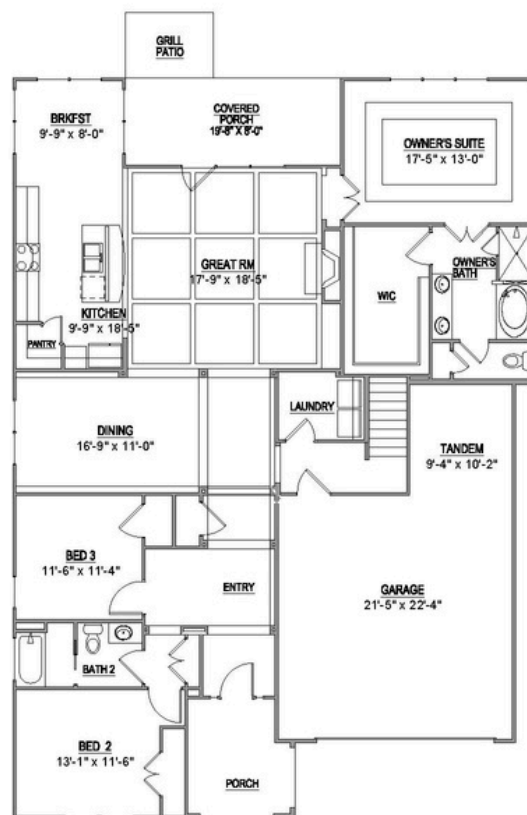
saddlebrookproperties.com

Saddlebrook Properties, LLC uses pictures, elevations and floor plans for illustrative marketing purposes only. Saddlebrook's working construction documents & codes take precedent in guiding the constructions of each home. Measurements, prices and specifications are subject to change without notice. All offerings are subject to errors and omissions.

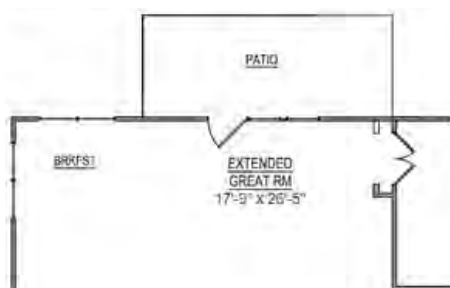
1st Floor

Key Features

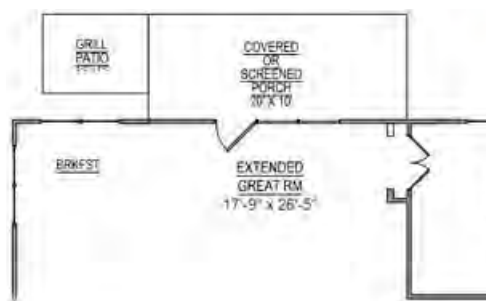
- Open Concept Living
- Owner's Suite on Main
- 2 additional Bedrooms & 1 Bath on the Main Level
- Formal Dining Room
- Breakfast Nook Adjacent to the Kitchen
- Covered Porch
- Tandem Garage Space



1st Floor Options



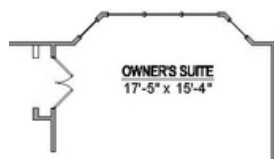
Optional Extended Great Room



Optional Extended Great Room with
Covered or Screened Porch



Optional 3rd Garage Bay



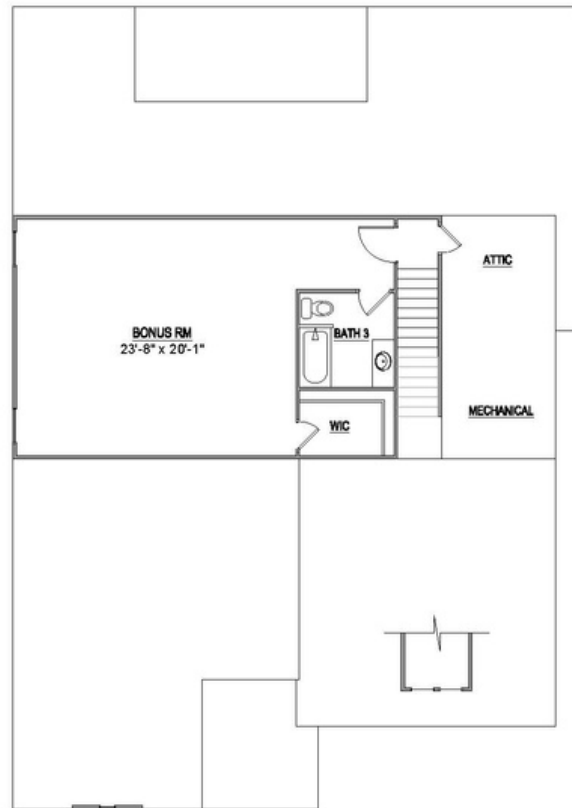
Optional Bay Window in
Owner's Suite

Saddlebrook Properties, LLC uses pictures, elevations and floor plans for illustrative marketing purposes only. Saddlebrook's working construction documents & codes take precedent in guiding the constructions of each home. Measurements, prices and specifications are subject to change without notice. All offerings are subject to errors and omissions.

2nd Floor

Key Features

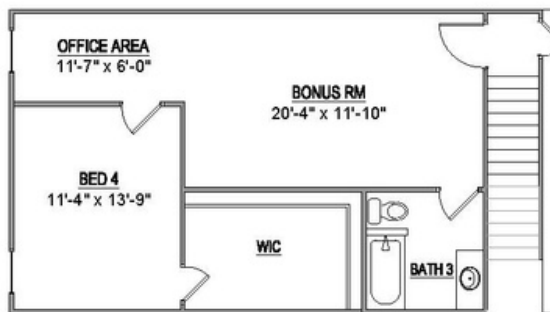
- Spacious Bonus Room
- Full Bathroom and Walk-in Closet
- Walk-in Attic



2nd Floor Options



Optional Christmas Closet



Optional 4th Bedroom

PARKSIDE



Home Features



3-5
Bedrooms



2.5-4.5
Bathrooms



3
Garage Bays

Square Footage

Total Living Area 3,031+ Sq. Ft.

1st Floor 1,956+ Sq. Ft.

2nd Floor 1,075+ Sq. Ft.

Contact



865-966-8700



info@saddlebrookproperties.com



saddlebrookproperties.com

Social



Saddlebrook Properties, LLC uses pictures, elevations and floor plans for illustrative marketing purposes only. Saddlebrook's working construction documents & codes take precedent in guiding the constructions of each home. Measurements, prices and specifications are subject to change without notice. All offerings are subject to errors and omissions.

PARKSIDE



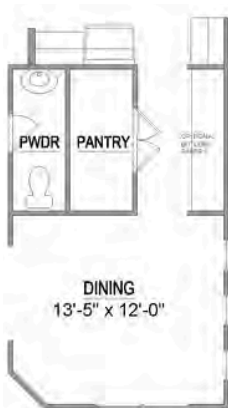
1st Floor

Key Features

- Front Porch
- Open Concept Living
- Owner's Suite on Main
- Flex Room
- Large Kitchen with Eat-in Cafe
- Walk-in Pantry
- Main Level Storage Under Staircase
- 3-car Garage
- Powder Room



1st Floor Options



Optional Dining Room
Instead of Flex Room



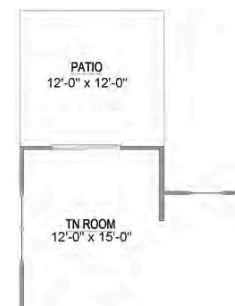
Optional 4th Bedroom
and 3rd Bathroom



Optional Covered Porch



Optional Screened Porch



Optional TN Room



Optional Valet

Saddlebrook Properties, LLC uses pictures, elevations and floor plans for illustrative marketing purposes only. Saddlebrook's working construction documents & codes take precedent in guiding the constructions of each home. Measurements, prices and specifications are subject to change without notice. All offerings are subject to errors and omissions.

PARKSIDE



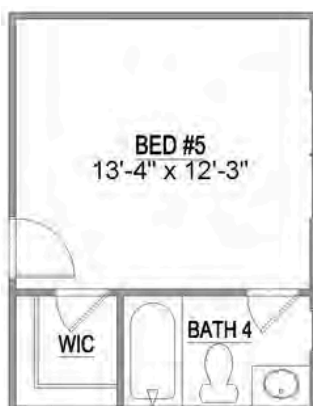
2nd Floor

Key Features

- Spacious Loft
- 1 Bedroom with Walk-in Closet & Sitting Area
- 1 Full Bathroom
- Walk-in Attic Storage



2nd Floor Options



Optional 5th Bedroom
and 4th Bathroom

Saddlebrook Properties, LLC uses pictures, elevations and floor plans for illustrative marketing purposes only. Saddlebrook's working construction documents & codes take precedent in guiding the constructions of each home. Measurements, prices and specifications are subject to change without notice. All offerings are subject to errors and omissions.

RIVERSIDE



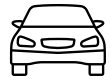
Home Features



3-5
Bedrooms



2.5-4.5
Bathrooms



2-3
Garage Bays

Square Footage

Total Living Area 2,944+ Sq. Ft.

1st Floor 2,112+ Sq. Ft.

2nd Floor 832+ Sq. Ft.

Contact



865-966-8700



info@saddlebrookproperties.com



saddlebrookproperties.com

Social



Saddlebrook Properties, LLC uses pictures, elevations and floor plans for illustrative marketing purposes only. Saddlebrook's working construction documents & codes take precedent in guiding the constructions of each home. Measurements, prices and specifications are subject to change without notice. All offerings are subject to errors and omissions.

RIVERSIDE



1st Floor

Key Features

- Open Concept Living
- Owner's Suite on Main
- Gourmet Kitchen
- Flex Room
- Walk-in Pantry
- Powder Room
- Courtyard Entry Garage
- Covered Porch



1st Floor Options



Optional 3rd Garage Bay



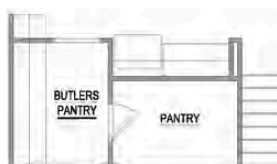
Optional Built-In
3rd Garage Bay



Optional 5th Bedroom
and 4th Bathroom



Optional Valet



Optional Butlers Pantry



Optional Extended Porch

Saddlebrook Properties, LLC uses pictures, elevations and floor plans for illustrative marketing purposes only. Saddlebrook's working construction documents & codes take precedent in guiding the constructions of each home. Measurements, prices and specifications are subject to change without notice. All offerings are subject to errors and omissions.

RIVERSIDE



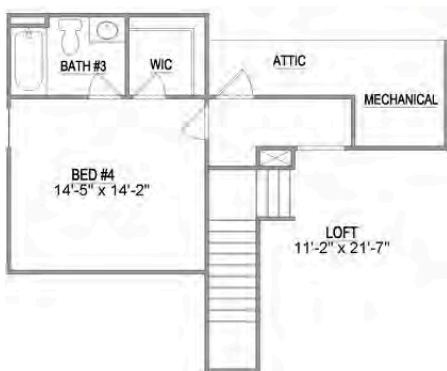
2nd Floor

Key Features

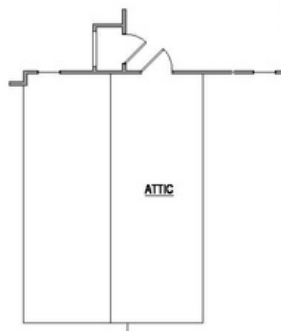
- Spacious Loft
- 2 Bedrooms
- 1 Full Bathroom
- Walk-in Attic Storage



2nd Floor Options



Optional 4th Bedroom
and 3rd Bathroom



Optional Attic Storage

Saddlebrook Properties, LLC uses pictures, elevations and floor plans for illustrative marketing purposes only. Saddlebrook's working construction documents & codes take precedent in guiding the constructions of each home. Measurements, prices and specifications are subject to change without notice. All offerings are subject to errors and omissions.