

# BROOKMERE

## Marketing Plans



## ADMIRAL

3 to 4 Bedrooms, 3.5 Baths

Total Living Area : 3,460 Square Feet

First Floor : 1,980 Square Feet

Second Floor : 1,480 Square Feet

(865) 966-8700

[Info@SaddlebrookProperties.com](mailto:Info@SaddlebrookProperties.com)

[www.SaddlebrookProperties.com](http://www.SaddlebrookProperties.com)



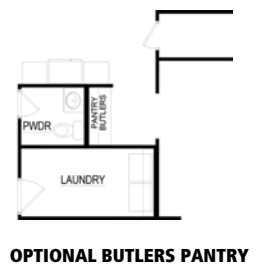
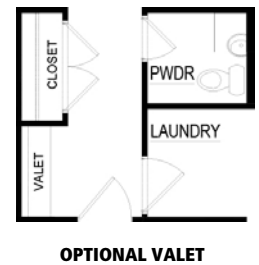
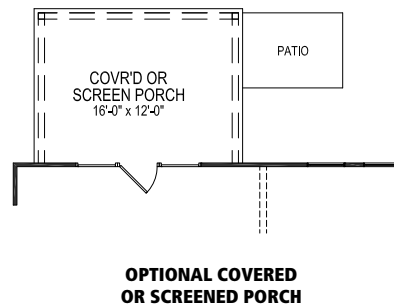
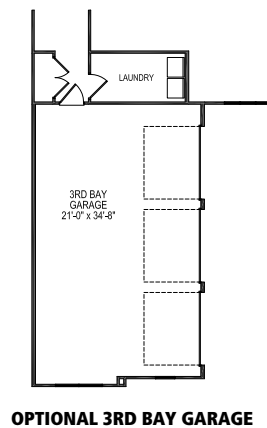
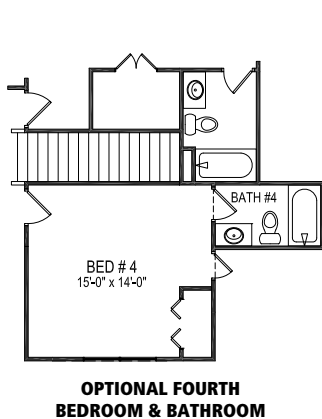
## 1st Floor



## 2nd Floor



## Floor Plan Options





**TRADITIONAL**



**FARMHOUSE**



**EUROPEAN**



**CLASSIC**

## AIKEN

3 to 5 Bedrooms

2.5 to 3.5 Bathrooms

Total Living Area : 2,917 Square Feet

First Floor : 2,079 Square Feet

Second Floor : 839 Square Feet

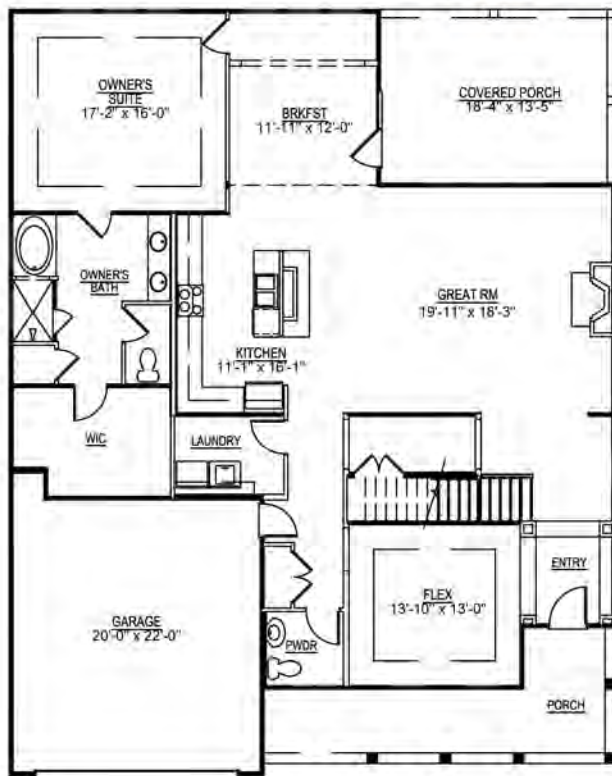
**(865) 966-8700**

[Info@SaddlebrookProperties.com](mailto:Info@SaddlebrookProperties.com)

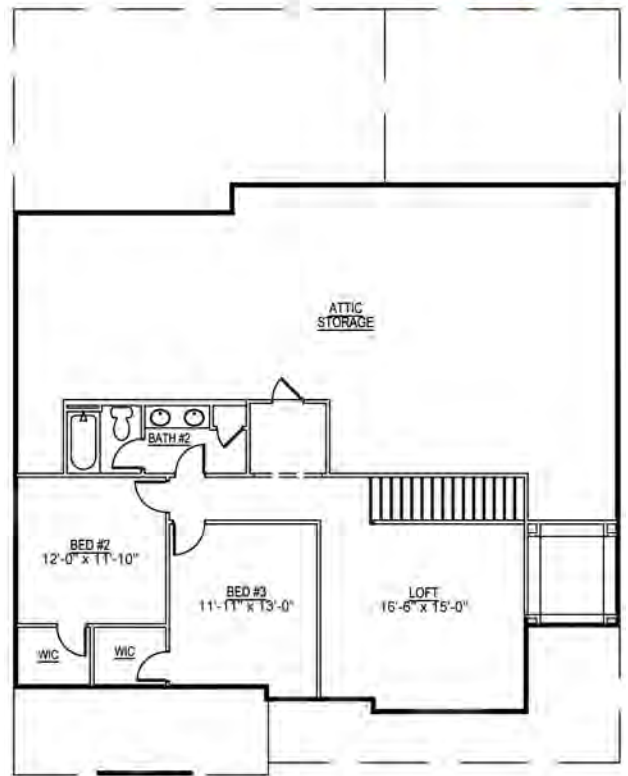
[www.SaddlebrookProperties.com](http://www.SaddlebrookProperties.com)



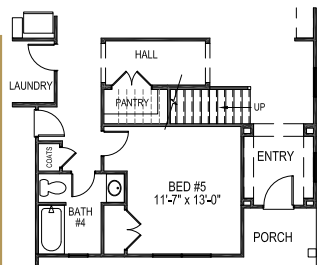
## 1st Floor



## 2nd Floor



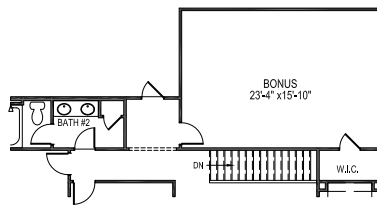
## Floor Plan Options



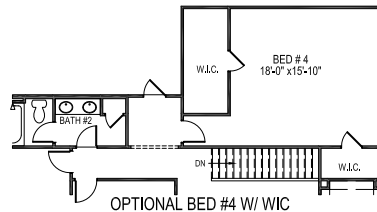
OPTIONAL BED #5 / BATH #4 ILO FLEX



OPTIONAL 3RD BAY GARAGE



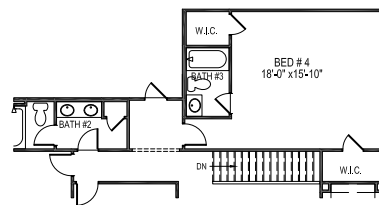
OPTIONAL BONUS RM



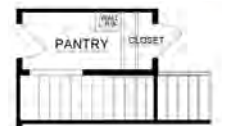
OPTIONAL BED #4 W/ WIC



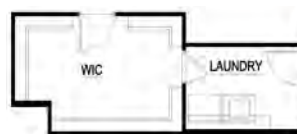
OPTIONAL SCREENED PORCH



OPTIONAL BED #4 / BATH #3



OPTIONAL EXTENDED PANTRY



OPTIONAL WIC LAUNDRY ACCESS



OPTIONAL BED #4&5 / BATH #3



EUROPEAN



TRADITIONAL



FARMHOUSE

## ALDERWOOD

**4 to 5** Bedrooms

**2.5 to 3.5** Bathrooms

Total Living Area : **2,833** Square Feet

First Floor : 1,578 Square Feet

Second Floor : 1,255 Square Feet

(865) 966-8700

Info@SaddlebrookProperties.com

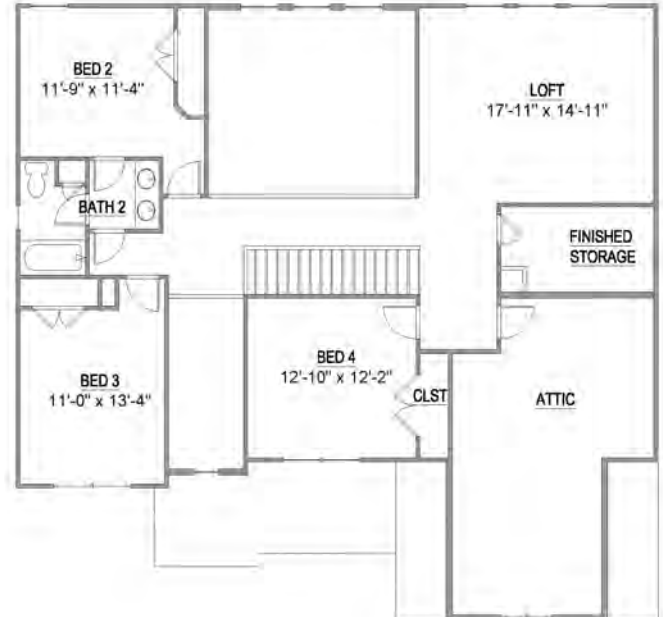
www.SaddlebrookProperties.com



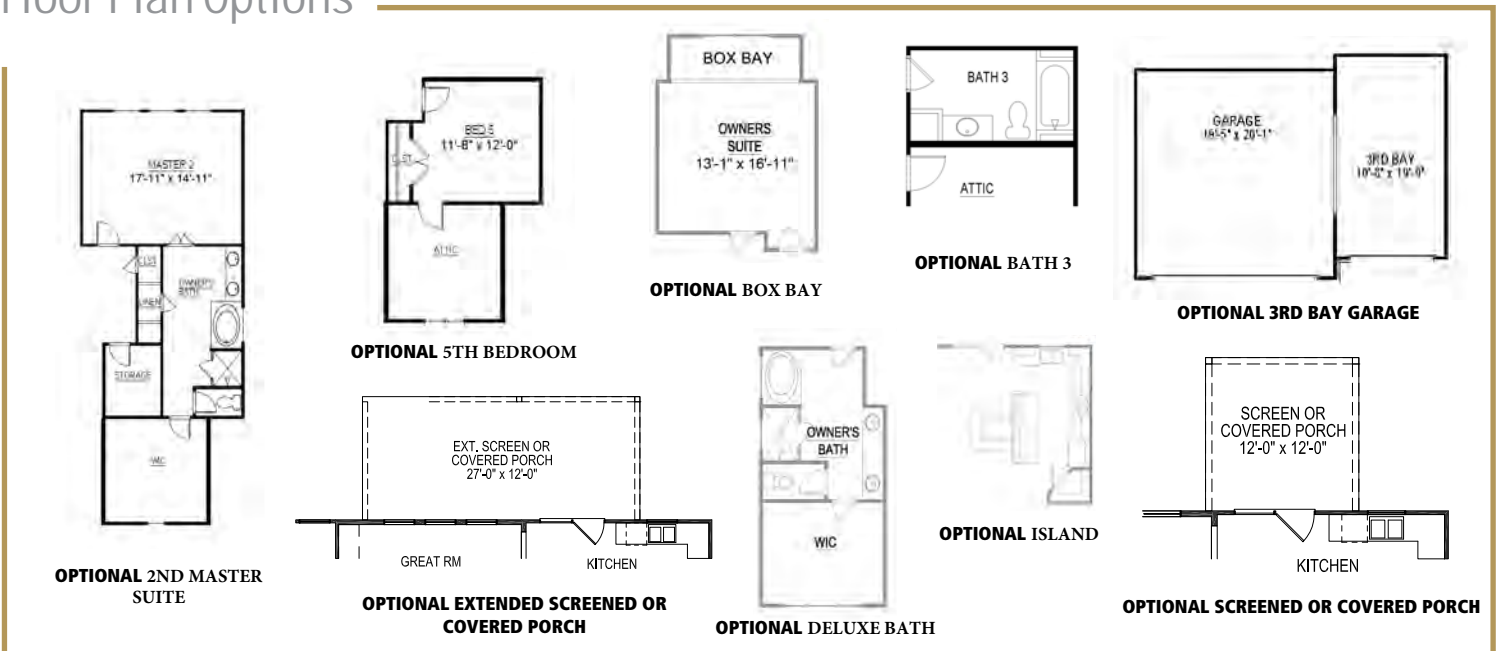
## 1st Floor



## 2nd Floor



## Floor Plan Options





 EUROPEAN



 OLD WORLD



 TRADITIONAL



 FARMHOUSE

## ASPEN

4 Bedrooms  
3 1/2 Bathrooms

Total Living Area : **3,194** Square Feet

First Floor : **2,185** Square Feet

Second Floor : **1,009** Square Feet

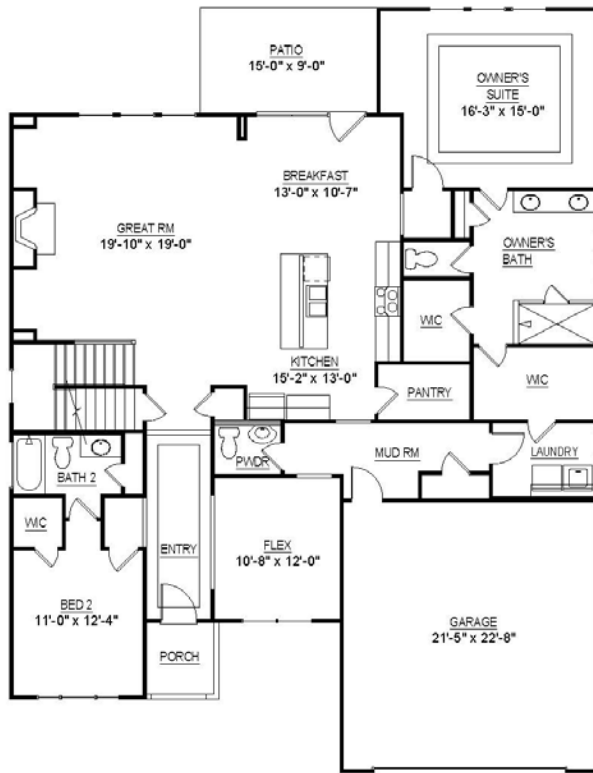
(865) 966-8700

[Info@SaddlebrookProperties.com](mailto:Info@SaddlebrookProperties.com)

[www.SaddlebrookProperties.com](http://www.SaddlebrookProperties.com)



## 1st Floor

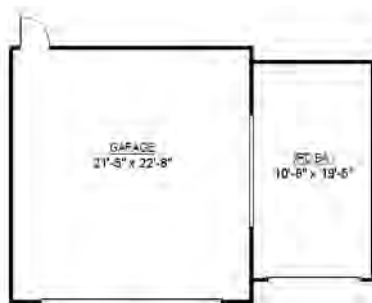


## 2nd Floor



## Floor Plan Options

OPTIONAL 3RD BAY GARAGE



OPTIONAL EXTENDED COVERED OR SCREENED PORCH



OPTIONAL COVERED OR SCREENED PORCH



OPTIONAL DELUXE BATH



OPTIONAL BEDROOM 5



OPTIONAL BATH 4



OPTIONAL BUTLERS PANTRY



OPTIONAL KITCHEN CABINETS

OPTIONAL VALET



OPTIONAL KITCHEN & PANTRY





EUROPEAN



TRADITIONAL

## Floorplan Features

- One Level Living
- Open Living Areas
- Covered Porch
- Luxurious Owner's Bath
- Gourmet Kitchen

### BRISTOL

3 Bedrooms  
2 Bathrooms

Total Living Area : 2,032 Square Feet

First Floor : 2,032 Square Feet

(865) 966-8700

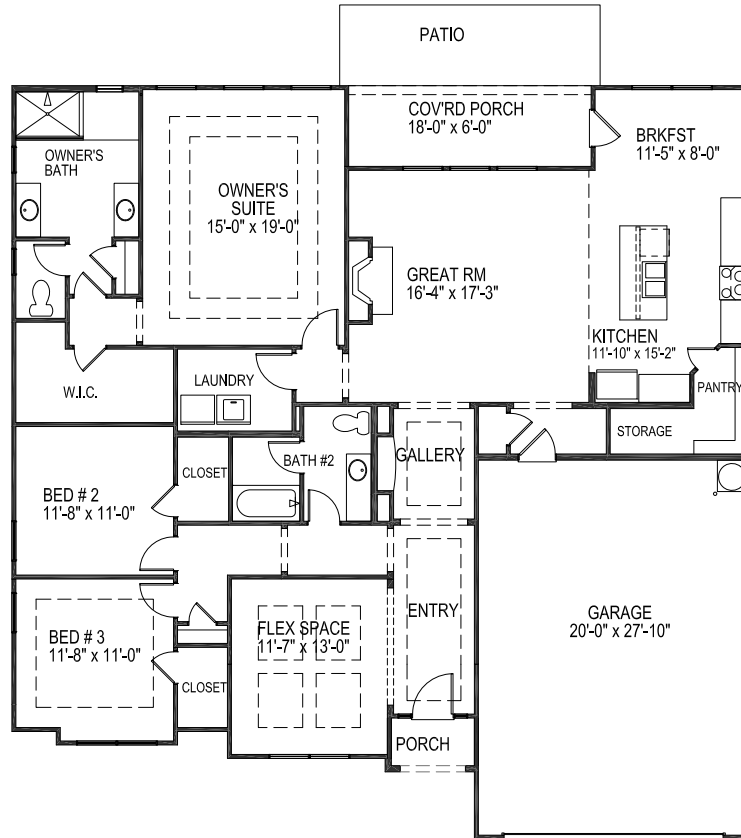
[Info@SaddlebrookProperties.com](mailto:Info@SaddlebrookProperties.com)

[www.SaddlebrookProperties.com](http://www.SaddlebrookProperties.com)

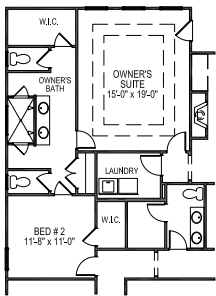


# BRISTOL

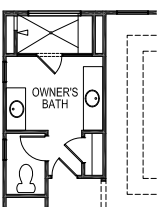
## 1st Floor



## Floor Plan Options



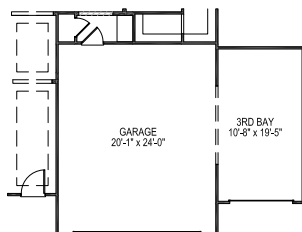
**OPTIONAL SPLIT LAYOUT  
W/ OWNER'S BATHROOM**



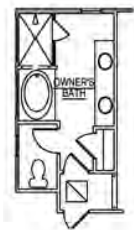
**OPTIONAL DELUXE  
OWNER'S BATH #2**



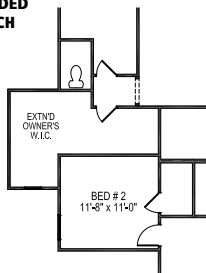
**OPTIONAL EXTENDED GREAT ROOM  
& BREAKFAST ROOM W/ EXTENDED  
COVERED OR SCREENED PORCH**



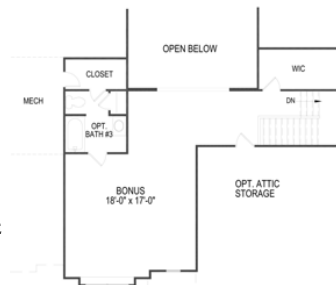
**OPTIONAL 3RD BAY GARAGE**



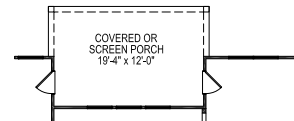
**OPTIONAL DELUXE  
OWNER'S BATH #1**



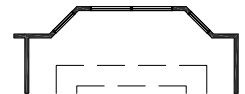
**OPTIONAL EXTENSION FOR  
OWNER'S WALK-IN CLOSET**



**OPTIONAL 2ND FLOOR BATHROOM  
WITH WALK-IN CLOSET**



**OPTIONAL SCREENED OR  
COVERED PORCH**



**OPTIONAL BAY WINDOW  
IN OWNER'S SUITE**



**OPTIONAL 2ND FLOOR BATHROOM**



Saddlebrook Properties, LLC uses pictures, elevations and floor plans for illustrative marketing purposes only. Saddlebrook's working construction documents & codes take precedent in guiding the constructions of each home. Measurements, prices and specifications are subject to change without notice. All offerings are subject to errors and omissions. Last Revision Date: 05.26.17

(865) 966-8700  
Info@SaddlebrookProperties.com  
www.SaddlebrookProperties.com



EUROPEAN



TRADITIONAL



FARMHOUSE

## BRISTOL WITH BONUS

3 to 4 Bedrooms  
2 to 3 Bathrooms

Total Living Area : 2,942 Square Feet

First Floor : 2,337 Square Feet

Second Floor : 605 Square Feet

(865) 966-8700

[Info@SaddlebrookProperties.com](mailto:Info@SaddlebrookProperties.com)

[www.SaddlebrookProperties.com](http://www.SaddlebrookProperties.com)



# BRISTOL WITH BONUS

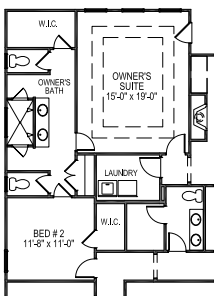
1st Floor



2nd Floor



## Floor Plan Options



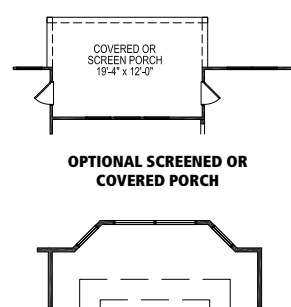
**OPTIONAL SPLIT LAYOUT  
W/ OWNER'S BATHROOM**



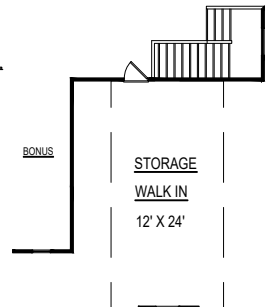
**OPTIONAL EXTENDED GREAT ROOM  
& BREAKFAST ROOM W/ EXTENDED  
COVERED OR SCREENED PORCH**



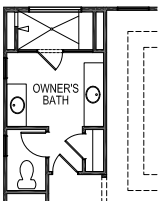
**OPTIONAL DELUXE  
OWNERS BATH #2**



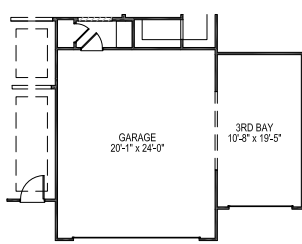
**OPTIONAL BAY WINDOW  
IN OWNER'S SUITE**



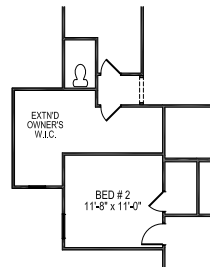
**OPTIONAL WALK IN  
STORAGE**



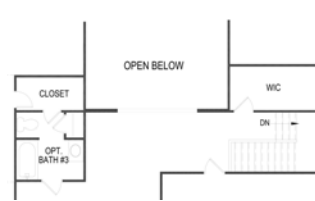
**OPTIONAL DELUXE  
OWNERS BATH #2**



**OPTIONAL 3RD BAY GARAGE**



**OPTIONAL EXTENSION FOR  
OWNER'S WALK-IN CLOSET**



**OPTIONAL 2ND FLOOR BATHROOM  
WITH WALK-IN CLOSET**



**OPTIONAL 2ND FLOOR BATHROOM**



Saddlebrook Properties, LLC uses pictures, elevations and floor plans for illustrative marketing purposes only. Saddlebrook's working construction documents & codes take precedent in guiding the constructions of each home. Measurements, prices and specifications are subject to change without notice. All offerings are subject to errors and omissions. Last Revision Date: 05.26.17

(865) 966-8700  
Info@SaddlebrookProperties.com  
www.SaddlebrookProperties.com



TRADITIONAL



EUROPEAN



FARMHOUSE

## ESSEX

4 to 5 Bedrooms  
2.5 to 3.5 Bathrooms

Total Living Area : 3,103 Square Feet

First Floor : 2,127 Square Feet

Second Floor : 976 Square Feet

(865) 966-8700

[Info@SaddlebrookProperties.com](mailto:Info@SaddlebrookProperties.com)

[www.SaddlebrookProperties.com](http://www.SaddlebrookProperties.com)



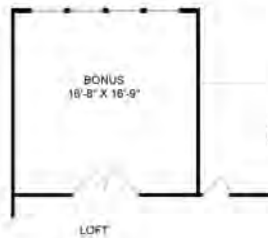
## 1st Floor



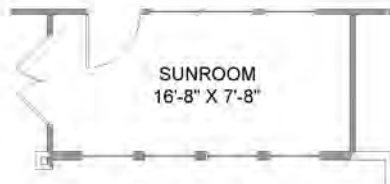
## 2nd Floor



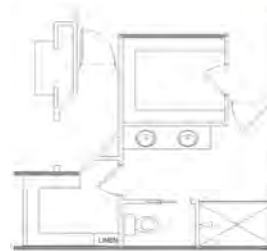
## Floor Plan Options



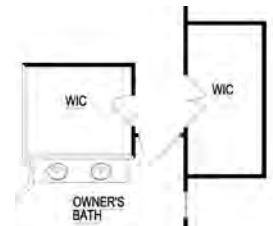
**OPTIONAL BONUS ROOM,  
REPLACES 2 STORY GREAT ROOM**



**OPTIONAL SUNROOM**



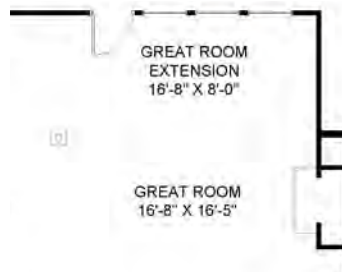
**OPTIONAL DELUXE BATH**



**OPTIONAL WALK IN CLOSET BUMP**



**OPTIONAL EXTENDED PORCH**



**OPTIONAL EXTENDED GREAT ROOM**



**OPTIONAL BEDROOM I/O OF STUDY**



**OPTIONAL 3RD BATHROOM**



## EVERETT

**4** Bedrooms  
**3 1/2** Bathrooms

Total Living Area : **3,086** Square Feet

First Floor : **1,847** Square Feet

Second Floor : **1,239** Square Feet

(865) 966-8700

Info@SaddlebrookProperties.com

www.SaddlebrookProperties.com



## 1st Floor

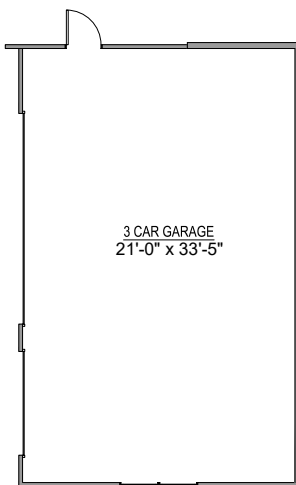


## 2nd Floor



## Floor Plan Options

OPTIONAL 3 CAR GARAGE



OPTIONAL COVERED PORCH



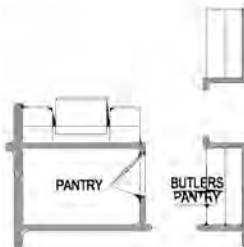
OPTIONAL SCREENED PORCH



OPTIONAL VALET



OPTIONAL BUTLERS PANTRY



OPTIONAL STUDY ILO GARAGE



OPTIONAL BED 5 & BATH 4 ILO GARAGE



OPTIONAL BED 5 ILO LOFT





EUROPEAN



TRADITIONAL



FARMHOUSE

## HARVILLE

**3 TO 5** Bedrooms  
**2.5 to 3.5** Bathrooms

Total Living Area : **2,862** Square Feet

First Floor : **2,471** Square Feet

Second Floor : **391** Square Feet

(865) 966-8700

[Info@SaddlebrookProperties.com](mailto:Info@SaddlebrookProperties.com)

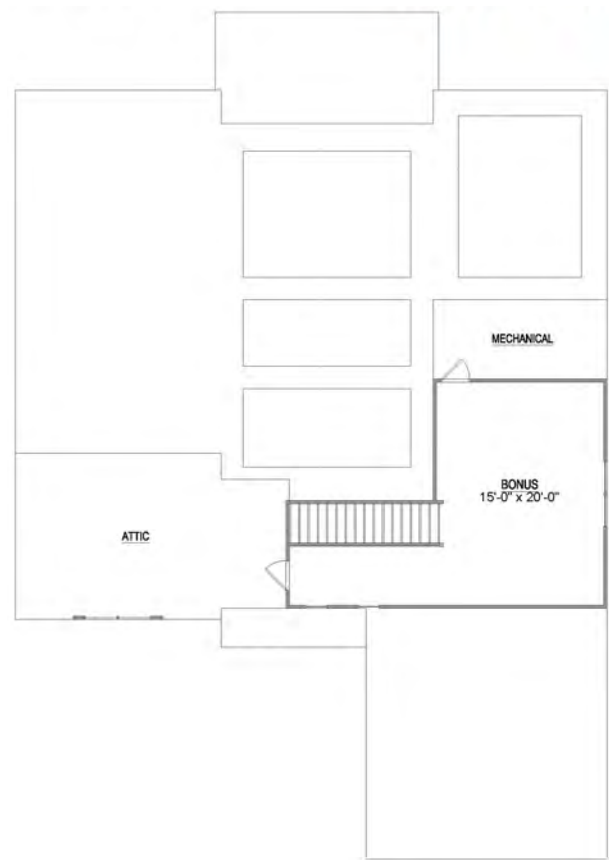
[www.SaddlebrookProperties.com](http://www.SaddlebrookProperties.com)



## 1st Floor



## 2nd Floor



## Floor Plan Options



**OPTIONAL BED 4 W/ BATH 3**



**OPTIONAL BATH 3**



**OPTIONAL BED 4 & 5 W/ BATH 3**



**OPTIONAL 3RD BAY GARAGE**



**OPTIONAL VALET**



**OPTIONAL EXTENDED COVERED PORCH**



CLASSIC



TRADITIONAL



EUROPEAN

## MARTIN

4 to 5 Bedrooms  
2.5 to **4** Bathrooms

Total Living Area : **2,990** Square Feet

First Floor : **1915** Square Feet

Second Floor : **1075** Square Feet

(865) 966-8700

[Info@SaddlebrookProperties.com](mailto:Info@SaddlebrookProperties.com)

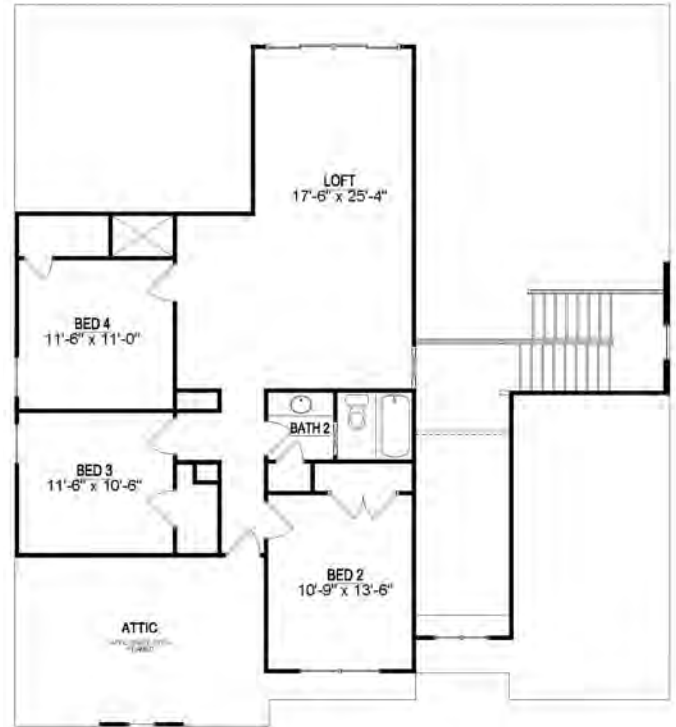
[www.SaddlebrookProperties.com](http://www.SaddlebrookProperties.com)



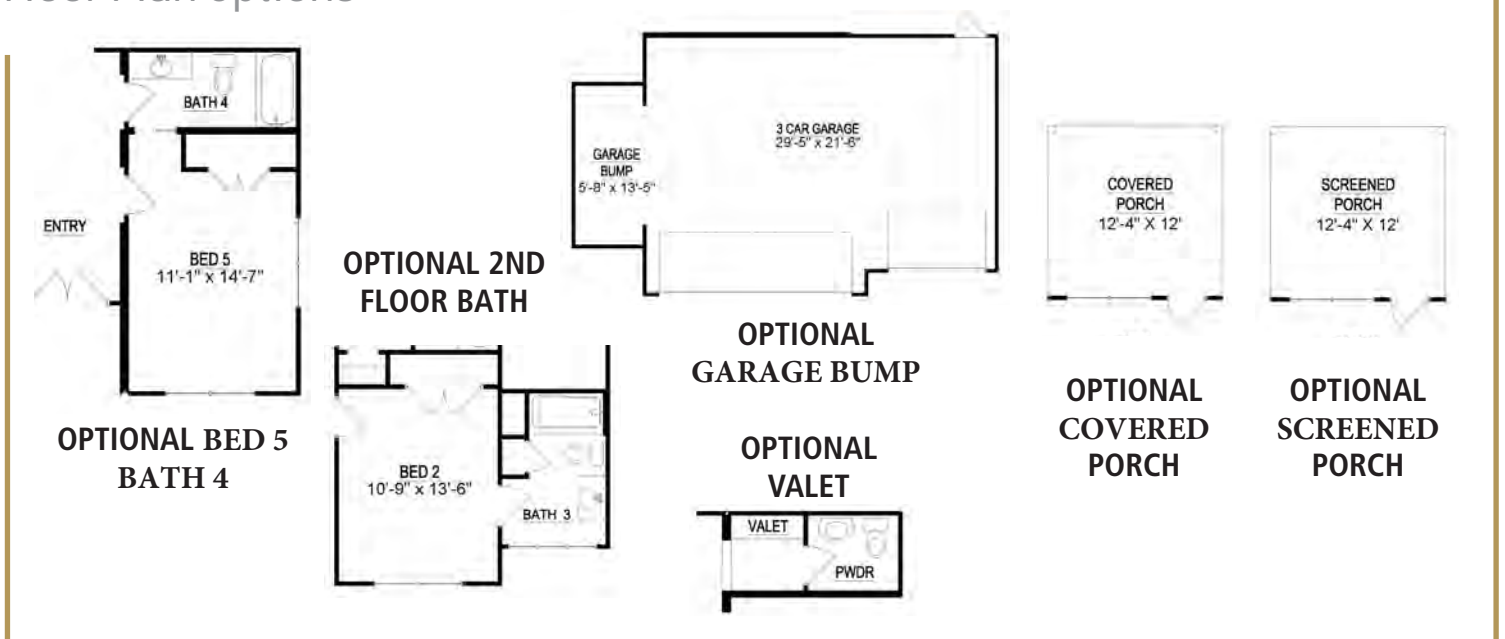
## 1st Floor



## 2nd Floor



## Floor Plan Options





EUROPEAN



TRADITIONAL



FARMHOUSE

## PARKSIDE

**3** Bedrooms  
**2 1/2** Bathrooms

Total Living Area : **3,031** Square Feet

First Floor : **1,956** Square Feet

Second Floor : **1,075** Square Feet

(865) 966-8700

[Info@SaddlebrookProperties.com](mailto:Info@SaddlebrookProperties.com)

[www.SaddlebrookProperties.com](http://www.SaddlebrookProperties.com)



## 1st Floor



## 2nd Floor



## Floor Plan Options

### OPTIONAL COVERED PORCH



### OPTIONAL SCREENED PORCH



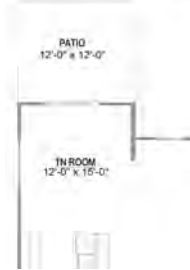
### OPTIONAL DINING ILO FLEX



### OPTIONAL BED 4 & BATH 3 ILO FLEX



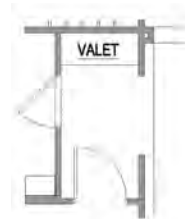
### OPTIONAL TENNESSEE ROOM



### OPTIONAL BED 5 & BATH 4 ILO LOFT



### OPTIONAL VALET





EUROPEAN



FARMHOUSE



TRADITIONAL

## RIVERSIDE

**3 to 5** Bedrooms

**2.5 to 4.5** Bathrooms

Total Living Area : **2,944** Square Feet

First Floor : **2,112** Square Feet

Second Floor : **832** Square Feet

(865) 966-8700

[Info@SaddlebrookProperties.com](mailto:Info@SaddlebrookProperties.com)

[www.SaddlebrookProperties.com](http://www.SaddlebrookProperties.com)



## 1st Floor



## 2nd Floor



## Floor Plan Options



**OPTIONAL BED 4 & BATH 3**



**OPTIONAL ATTIC STORAGE**



**OPTIONAL 3RD BAY**



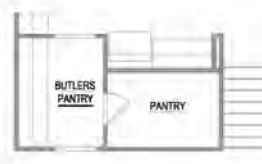
**OPTIONAL BUILT-IN 3RD BAY**



**OPTIONAL BED 5 & BATH 4**



**OPTIONAL VALET**



**OPTIONAL BUTLER'S PANTRY**



EUROPEAN



TRADITIONAL



FARMHOUSE

## WESTON

**3-4** Bedrooms

**2.5** to **4** Bathrooms

Total Living Area : **2,907** Square Feet

First Floor : **1,950** Square Feet

Second Floor : **957** Square Feet

(865) 966-8700

Info@SaddlebrookProperties.com

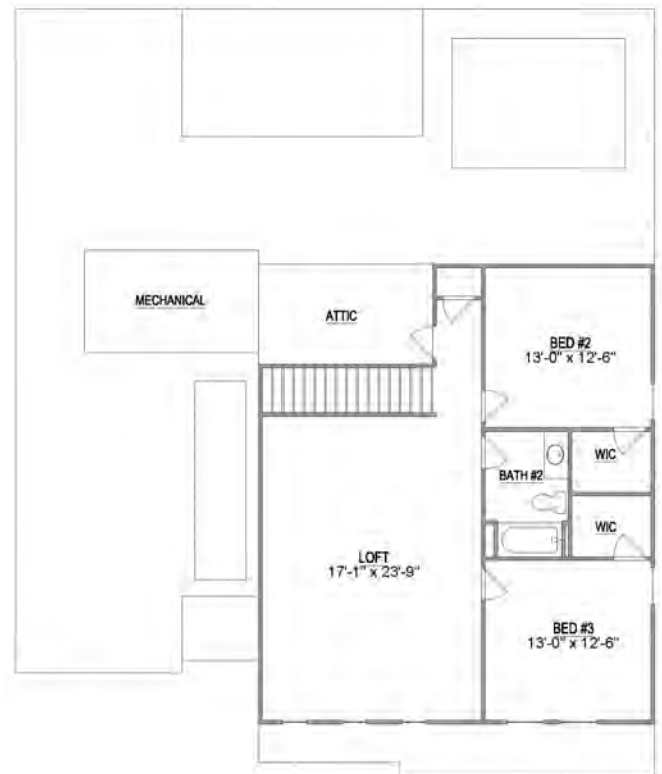
www.SaddlebrookProperties.com



## 1st Floor



## 2nd Floor



## Floor Plan Options



**OPTIONAL BED 4 & BATH 3**



**OPTIONAL BATH 4**



**OPTIONAL OFFICE**



**OPTIONAL SCREEN PORCH**



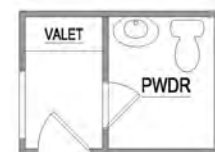
**OPTIONAL DELUXE LAUNDRY**



**OPTIONAL BSMNT DELUXE LAUNDRY**



**OPTIONAL BUTLERS PANTRY**



**OPTIONAL VALET**



**EUROPEAN**



**TRADITIONAL**



**FARMHOUSE**

## **WILDWOOD**

**4 to 5 Bedrooms**  
**3.5 Bathrooms**

**Total Living Area : 3,285 Square Feet**

**First Floor : 2,023 Square Feet**

**Second Floor : 1,262 Square Feet**

**(865) 966-8700**

**[Info@SaddlebrookProperties.com](mailto:Info@SaddlebrookProperties.com)**

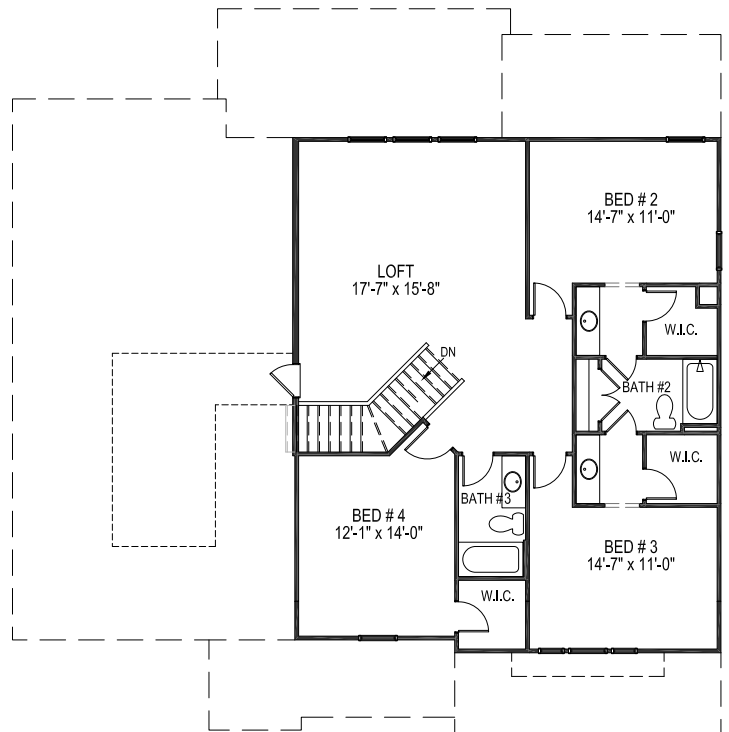
**[www.SaddlebrookProperties.com](http://www.SaddlebrookProperties.com)**



## 1st Floor



## 2nd Floor



## Floor Plan Options



**OPTIONAL COVERED/SCREENED PORCH**



**OPTIONAL BATH 2**



**OPTIONAL OFFICE I/O DINING ROOM**



**OPTIONAL DELUXE BATH**



**OPTIONAL 3RD BAY GARAGE**



**OPTIONAL TENNESSEE ROOM**



**OPTIONAL COFFERED CEILING**



## WILLOW

**4 to 5** Bedrooms, **3 TO 4** Baths

Total Living Area : **3,185** Square Feet

First Floor : **2,283** Square Feet

Second Floor : **902** Square Feet

(865) 966-8700

[Info@SaddlebrookProperties.com](mailto:Info@SaddlebrookProperties.com)

[www.SaddlebrookProperties.com](http://www.SaddlebrookProperties.com)



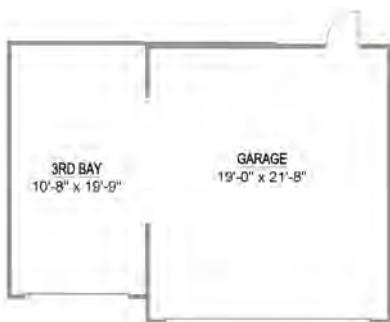
## 1st Floor



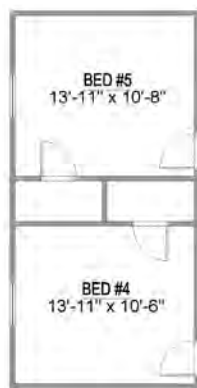
## 2nd Floor



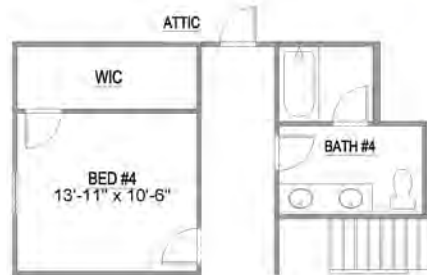
## Floor Plan Options



**OPTIONAL 3RD BAY GARAGE**



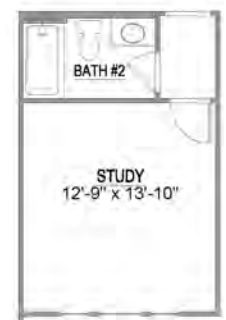
**OPTIONAL BED 5**



**OPTIONAL BATH 4**



**OPTIONAL VALET**



**OPTIONAL STUDY ILO BED 2**