



**ELEVATION - A**



**ELEVATION - B**



**ELEVATION - C**

## **GRAYSON**

**3 to 4 Bedrooms**  
**2 to 3 Bathrooms**

**Total Living Area : 2,176 Square Feet**

**First Floor : 1,496 Square Feet**

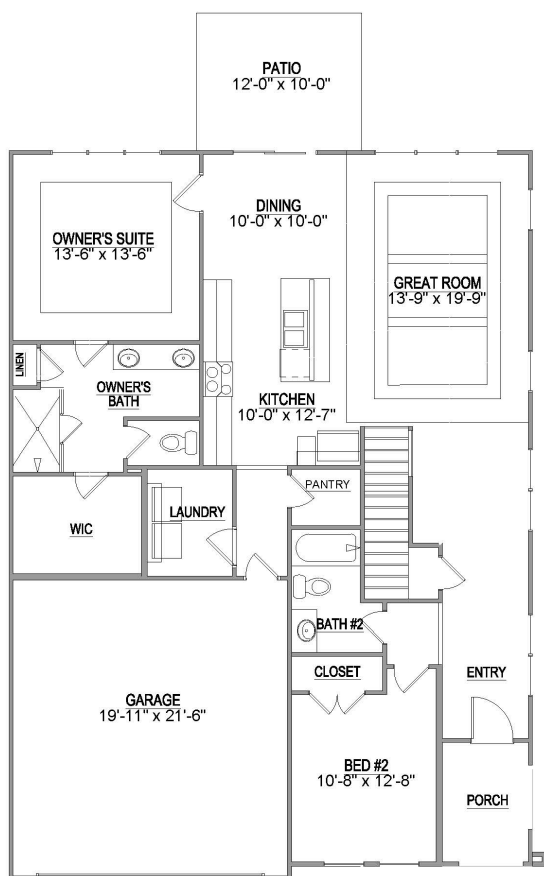
**Second Floor : 680 Square Feet**

**(865) 966-8700**

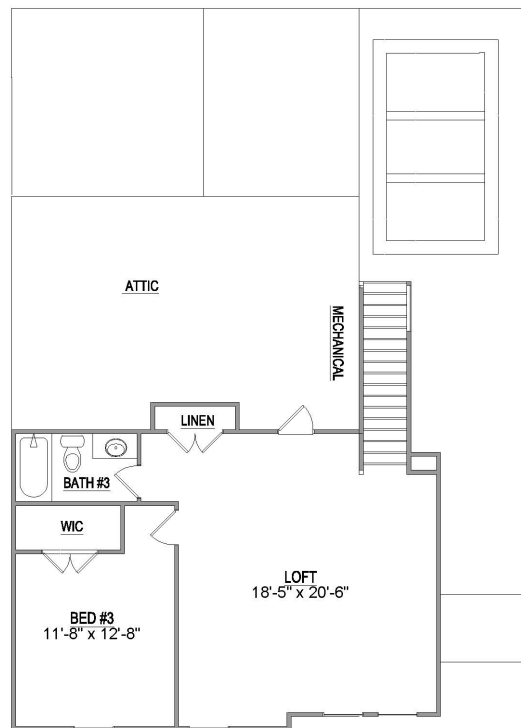
**Info@SaddlebrookProperties.com**

**www.SaddlebrookProperties.com**

## 1st Floor



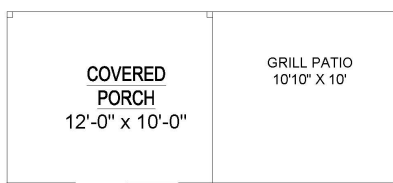
## 2nd Floor



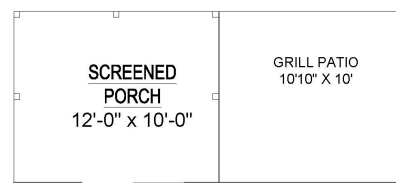
## Floor Plan Options



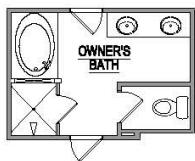
**OPTIONAL BED 4**



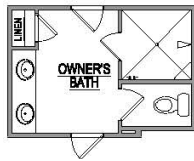
**OPTIONAL COVERED PORCH**



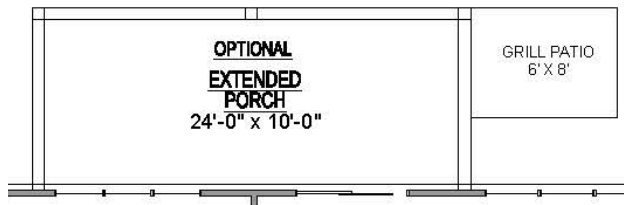
**OPTIONAL SCREENED PORCH**



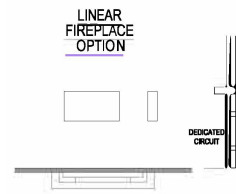
**OPTIONAL DELUXE TUB**



**OPTIONAL DELUXE BATH**



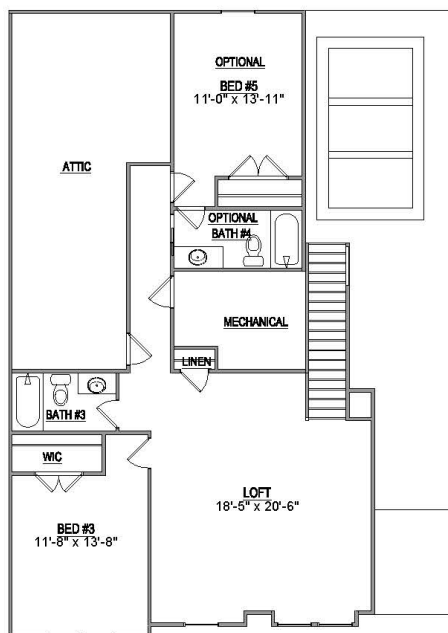
**OPTIONAL EXTENDED PORCH**



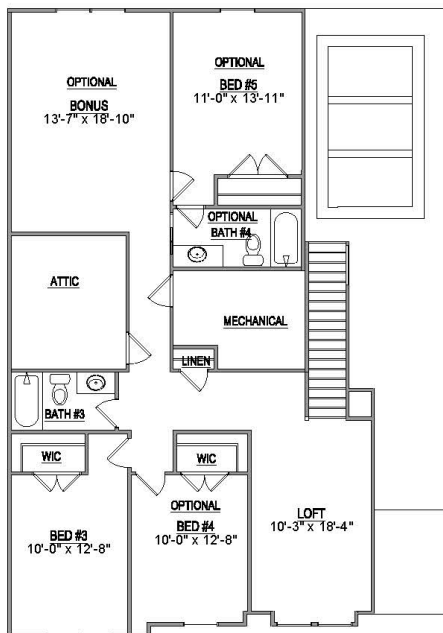
**OPTIONAL LINEAR FIREPLACE**

## Floor Plan Options

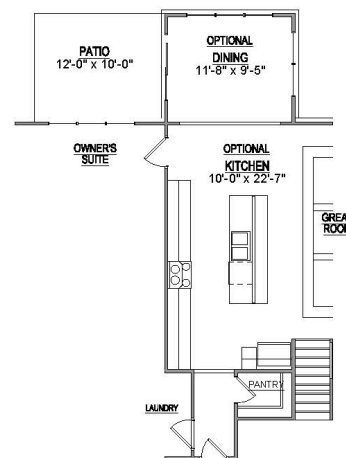
**OPTIONAL  
BED 5 BATH 4**



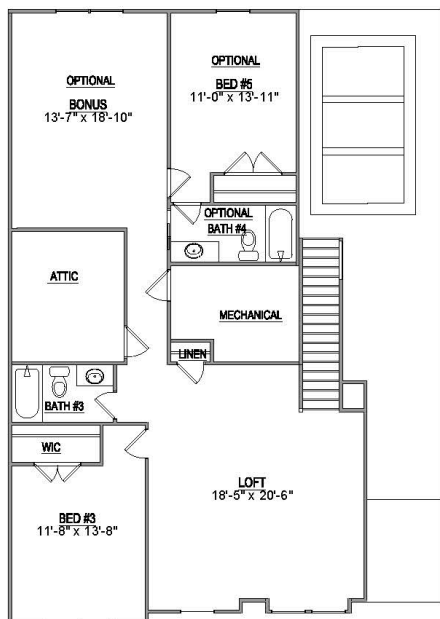
**OPTIONAL  
BED 4  
BED 5 BATH 4**



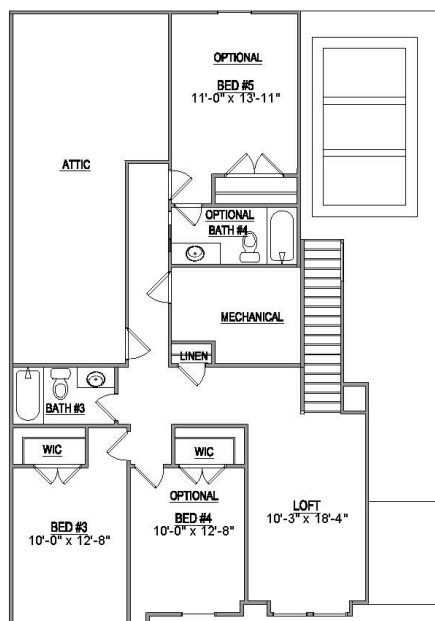
**OPTIONAL  
DELUXE KITCHEN  
DINING**



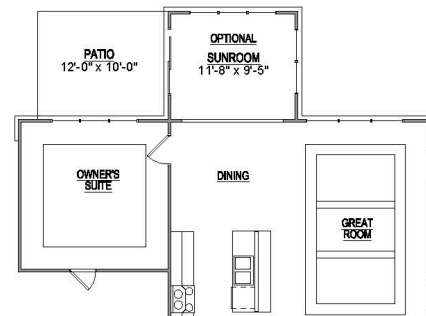
**OPTIONAL  
BONUS RM  
BED 5 BATH 4**



**OPTIONAL  
BED 4  
BONUS RM  
BED 5 BATH 4**



**OPTIONAL  
SUNROOM**



**OPTIONAL  
SUNROOM  
COVERED PORCH**

